



Hosted by

MENACTRIMS
Middle East North Africa Committee for
Treatment and Research in Multiple Sclerosis

7th MENACTRIMS CONGRESS

November 11-12, 2022
Intercontinental Citystars Cairo

In collaboration with

ECTRIMS
EUROPEAN COMMITTEE FOR TREATMENT
AND RESEARCH IN MULTIPLE SCLEROSIS



European Charcot Foundation



Diamond Sponsors

MERCK



NOVARTIS



Platinum Sponsor

Biogen







Dear Colleagues,

It gives me great pleasure to welcome you at the Seventh Middle East North Africa Committee for Research and Treatment in Multiple Sclerosis (MENACTRIMS) Congress which will take place from November 11th to November 12th, 2022.

The congress aim is to provide a forum of excellence in MS education and research. Building on the collective efforts of the scientific committee, the meeting will deliver state-of-the-art presentations on MS by renowned international and regional keynote speakers. The content of the meeting includes up to date information on the latest treatments, clinical research, therapeutic strategies, pathology, imaging, epidemiology, diagnosis, biomarkers, neuromyelitis optica, and much more.

The congress convenes over a two-day period to present major updates through plenary sessions and scientific symposia. This year's congress will also feature parallel sessions addressed to nurses in collaboration with the International Organization of MS Nurses (IOMSN) and the Consortium of Multiple Sclerosis Centers (CMSC), and to regional MS societies in collaboration with the MS International Federation (MSIF). In addition, the European Charcot Foundation will participate in the meeting through a scientific symposium.

We are excited to see you here at this unique educational experience. We appreciate your active participation and wish you an enjoyable stay in the breath-taking city of Cairo.

Yours Sincerely,



Bassem I. Yamout, MD, FAAN
President, MENACTRIMS



ABOUT MENACTRIMS



ABOUT MENACTRIMS

MENACTRIMS is an independent non-profit scientific organization that facilitates communication and creates synergies among clinicians and scientists to promote and enhance research and improve clinical outcomes in multiple sclerosis (MS). The main objectives of the organization are as follows:

- To support and promote basic and clinical research in multiple sclerosis in the Middle East and North Africa regions
- To act as representative of the multiple sclerosis research community
- To be actively involved in coordinating initiatives in the field of research both in our region and worldwide in collaboration with national and international MS organizations
- To establish National and Regional MS registries and to collaborate database in order to formulate a large MS registry
- To develop regular updated guidelines pertaining to diagnosis and therapy of MS in this region
- To organize at least bi-annual congresses in the field of treatment and research in multiple sclerosis
- To encourage young researchers in the field of multiple sclerosis.
- To collaborate with relevant national and local associations in the region to enhance MENACTRIMS mission

BOARD OF DIRECTORS

Prof. Bassem I Yamout
President
United Arab Emirates

Dr. Maurice Dahdaleh
Treasurer
Jordan

Prof. Riadh Gouider
Vice President
Tunisia

Dr. Raed Alroughani
Secretary General
Kuwait

Prof. Magd Zakaria
Member
Egypt

Dr. Mohammed Al-Jumrah
Vice President
Saudi Arabia

Prof. Saeed Bohlega
Chair, Scientific Committee
Saudi Arabia

Dr. Jihad Inshasi
Member
United Arab Emirates

MENACTRIMS EXECUTIVE SECRETARY

Dr. Maya Zeineddine
MENACTRIMS Executive Secretary
Lebanon

HONORARY MEMBER

Dr. Saher Hashem
Honorary President of MENACTRIMS
Egypt



CONGRESS COMMITTEES



ORGANIZING COMMITTEE

Prof. Magd Zakaria- Chair
Professor of Neurology
Ain Shams University
Cairo, Egypt

Prof. Maged Abdel Naseer
Professor of Neurology and Psychology
Cairo University
Cairo, Egypt

Dr. Jihad Inshasi
Consultant Neurologist
Rashid Hospital & Dubai Medical College
Dubai, United Arab Emirates

Prof. Riadh Gouider
Consultant Neurologist, Head of Neurology
Department
Razi Hospital
Tunis, Tunisia

Dr. Maya Zeineddine
Pharmacist & MS Specialist
MENACTRIMS
Beirut, Lebanon

SCIENTIFIC COMMITTEE

Dr. Raed Alroughani- Chair
Director of MS Clinic
Amiri Hospital & Dasman Research Institute
Kuwait City, Kuwait

Dr. Saeed Bohlega
Consultant Neurologist, Professor of Neurology
Department of Neurosciences
King Faisal Specialist Hospital and Research
Centre
Riyadh, Saudi Arabia

Prof. Hatem Samir
Professor of Neurology and Psychology
Cairo University, Kasr Al-Ainy Hospital
Cairo, Egypt

Dr. Hany Mohamed Aref
Professor of Neurology
Ain Shams University
Cairo, Egypt

Dr. Maurice Dahdaleh
Consultant Neurologist
Khalidi Hospital and Medical Center
Amman, Jordan

Dr. Mohamad Sahraian
Associate Professor of Neurology
Sina Hospital, Tehran University of Medical
Sciences
Tehran, Iran

Prof. Nevine Shalaby
Professor of Neurology and Psychology
Cairo University
Cairo, Egypt



RESEARCH GRANT

More than
150,000 patients
are believed to suffer from MS
currently in the
MENA region

INTRODUCTION

MS is a chronic, inflammatory, demyelinating, autoimmune disease of the central nervous system. It is among the most common causes of neurological disability in young adults and occurs at least twice as frequently in women as in men.

The incidence and prevalence of this debilitating disease continue to rise in the region as observed by several local epidemiology publications and patient registries. Although we have seen a leap in disease awareness, we continue to learn and develop our understanding of the underlying causes, disease progression and treatment alternatives. There is no doubt that more can be done to improve our understanding of the disease characteristics and their impact on the diverse population inhabiting the MENA region.

ABOUT THE RESEARCH GRANT

As part of MENACTRIMS's commitment to support and expand MS research across the Middle East & North Africa region, we will fund two MENACTRIMS Research Grants per year.

The aim of this annual scientific grant is to support regional research projects by academic & clinical researchers to enhance our understanding of multiple sclerosis and help improve the quality of life of MS patients in the MENA region. Potential research areas that will be funded through the MENACTRIMS Research Grant will include: MS risk factors, epidemiology, natural history and other relevant topics to clinical practice in the MENA region.

UP TO **USD 25,000** WILL BE PAID PER GRANT
FOR INFO. ON ELIGIBILITY, CRITERIA & APPLICATION VISIT:

menactrims.org

RESEARCH GRANT DEADLINES

Letter of Intent
JUNE 15, 2023

Letters of intent must be
submitted electronically

Full Application
SEPTEMBER 15, 2023

Successful candidates will be notified by email
to submit their full application proposal

*The winner will be announced at the
Eighth MENACTRIMS Congress in 2023*

APPLY NOW!

ELIGIBILITY GUIDELINES

1. The research project should be supervised by an academic and/or clinical senior neurologist practicing in an academic institution and/or a research center that has the ability required to carry out the project.
2. The subject of the research project must be relevant to clinical practice in the MENA region for the ultimate benefit of patients.
3. The following non-exhaustive topics are considered important to our region and will therefore be prioritized: MS risk factors, epidemiology, vitamin D and MS, quality of life, prognosis, genetics, and clinical aspects of MS.
4. The research should not be commercially driven or biased towards any specific product.
5. The research must be of scientific value to the scientific community at large and must be designed to provide meaningful information or conclusions with clear value to the MS community in the region.
6. The research objective must be clear and pre-defined, innovative, feasible & has the potential for practical utility.
7. The research must be conducted in a country in the MENA region
8. The research can be within a multicenter/multinational project and can involve collaborations across borders in the MENA region
9. The amount awarded for the research must not exceed the legitimate costs to be incurred in carrying out the research, and must be commensurate with and not exceed fair market value for the research activities.
10. All applicable regulatory requirements must be observed, including, as appropriate, regulatory filings and ethics committee/IRB review and approvals.
11. The selected researchers must have the appropriate training and expertise to conduct the research as determined by the MENACTRIMS Research Committee

GRANT PAYMENT

1. Up to USD 25,000 will be paid per grant based on research milestones pre-defined by the scientific committee.
2. Milestones would need to be completed by the researcher to receive the subsequent payments. Non-completion of the milestones can lead to withdrawal of the research funding.
3. Candidates should submit their proposal Online
4. The application steps and deadlines should be respected or the proposal would be ineligible for review by the scientific committee.
5. Publications, posters and verbal communication at MENACTRIMS or any other local, regional or international scientific gathering that emerge from the work undertaken during the fellowship period should acknowledge MENACTRIMS for its support.
6. The grant will be awarded in a competitive review process conducted by an independent scientific review committee composed of senior MS experts.

APPLICATIONS EVALUATION CRITERIA

- Candidate qualifications, educational history and evaluation of career plans. A CV with references needs to be submitted with the application.
- Qualifications and characteristics of the proposed fellowship mentor and host institution.
- The proposed research plan, including assessment of the scientific quality, innovation, perceived feasibility, quality of letters of endorsement from the proposed mentor and from referees at the fellow's home institution /center, etc.



ACKNOWLEDGMENT

The Board of Directors of MENACTRIMS express their appreciation to all those who generously contributed to the success of the Seventh MENACTRIMS Congress



Diamond



MERCK



NOVARTIS



Platinum



Biologix



Gold



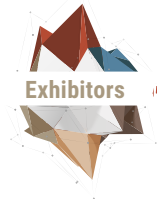
hikma.



Silver



Janssen **Neuroscience**
PHARMACEUTICAL COMPANIES OF *Johnson & Johnson*



Exhibitors



pharma science

ACKNOWLEDGMENT



The Board of Directors of MENACTRIMS express their appreciation to all MS societies who generously contributed to the success of the Seventh MENACTRIMS Congress



CONGRESS OVERVIEW

ACCREDITATION

The Seventh MENACTRIMS Congress is accredited for 19.0 CME hours by the American Association of Continuing Medical Education (AACME)

CONGRESS ORGANIZER

Main Organizer

Phone: +971 50 9299239 / +90 53 99 52 9229
Email: bkadara@lumina.ae
Web: www.lumina.ae

LUMINA

Local Organizer

Phone: +201 001 634 570
Email: khalid@misr2000online.net
Web: www.misr2000online.net

 MISR
2000
Medical conferences







DELEGATE INFORMATION

PRAYER

Friday prayers will take place at nearest mosque by the hotel that is a 9 minute walk at the Armed Forces Mosque. Ushers will be available to provide directions to delegates.

CONGRESS LUNCH

Lunch is served every day during the indicated hours in the program at the Shahrazad Restaurant on the -4 level.

VALET PARKING

Valet parking is complimentary from each lobby and will not require any validation. Delegates are encouraged to show their neck lanyards to the valet to confirm their presence at the congress.

WIRELESS INTERNET

Complimentary wireless internet is provided by the hotel. In order to connect to the internet, please follow these steps on your mobile device, tablet or laptop:

1. Connect to "early treatment" wireless Internet from your settings
2. Insert the password "MAVENCLAD"
3. Click on the "Next" button



CME CERTIFICATES

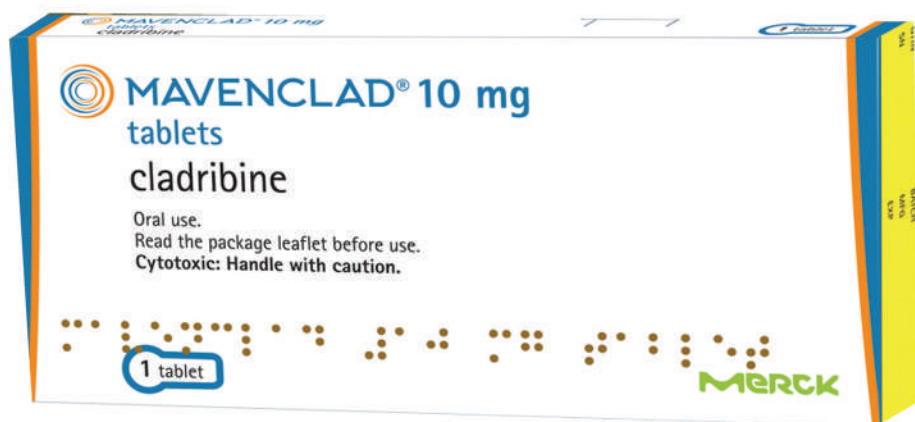
CME Certificates will be provided at the end of the congress. They will also be sent electronically upon answering a survey up to 2 weeks after the congress.

EMERGENCIES

Lumina and MISR2000 officers will be available around the congress venue area to provide assistance and answer any inquiries from delegates.

In case of an emergency such as loss of valuables, finding items or requiring a paramedic please visit the information desk at the registration area.

MAVENCLAD is now available in health insurance,
universal health insurance and universities



Always read the full prescribing information

Healthcare professionals are asked to report any suspected adverse reaction to Egyptian pharmacovigilance center (EPVC).
Ministry of health Mavenclad approved leaflet date (16-8-2018).



HN0059A2488/062022
19/06/2023



Registration Number: 33405/2019
Merck Ltd., Egypt | Building 4 Section 1150, End of Abdel Hamid Badawi St.
Sheraton Buildings District, 11361 | Cairo – Egypt Tel: +202.22686614 / 15 /
21 Ext. 312 | Fax: +202.22686617



MAVENCLAD
cladribine tablets
10mg



INDUSTRY TALKS

SATELLITE SYMPOSIA

During the MENACTRIMS scientific program, the following satellite symposia will take place at the Main Hall on Level -4:

Novartis	November 11 at 11:00-11:30
Merck	November 11 at 14:30-15:00
Roche	November 11 at 16:30-17:00
Biologix	November 12 at 10:30-11:00

NURSING SATELLITE SYMPOSIA

During the nursing session on November 12, the following satellite symposia will take place at the Abdeen hall on Level -3:

Roche	November 12 at 14:00-14:30
Biologix	November 12 at 14:30-15:00
Novartis	November 12 at 15:00-15:30
Merck	November 12 at 15:30-16:00

Note: all industry-related satellite symposia are not CME accredited.



MAYZENT

siponimod

0.25 mg and 2 mg film-coated tablets

Not actual patients.

IT'S TIME FOR MAYZENT



NOVARTIS | Reimagining Medicine

For full prescribing information, Please contact:
Novartis Pharma S.A.E.
3 El Sawah St., El Amiria, Cairo, Egypt
P.O. Box 1893 - Code 11511
Tel.: +202 22861000
Fax: +202 22861495
www.novartis.com.eg

MOBILE APPLICATION

Search for:

“Seventh MENACTRIMS Congress”

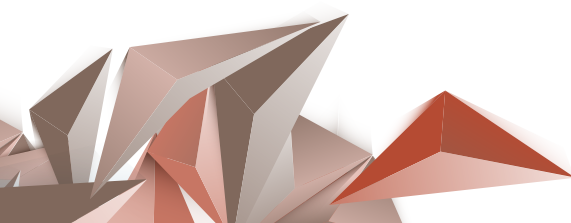
in the iOS & Google Play Store or scan the QR codes below

*To access: use your registered email address and pin received by email to
login*

The congress app is supported by:



We encourage all delegates and exhibitors
to use the congress application





POSTER AREA

The poster area is located in the exhibition hall area. Authors will be available to answer and discuss their presentations during the main coffee breaks as indicated in the program. The poster categories are:

P101-P135	Epidemiology of MS
P201-P203	Immunology of MS
P301-P304	MRI in MS
P401-P412	MS Diagnosis
P501-P509	MS Pathology
P601-P607	Neuromyelitis Optica
P701-P707	Pediatric MS
P801-P828	Recent Advances in MS Therapy
P901-P902	Update on Secondary Progressive MS

WINNING POSTERS

Winning authors will be acknowledged during the closing ceremony taking place on November 12 at 16:45.

PUBLICATION

The abstracts will be published in Multiple Sclerosis and Related Disorders Journal.

ABSTRACTS BOOKLET

To download the abstracts booklet please scan the QR code below:



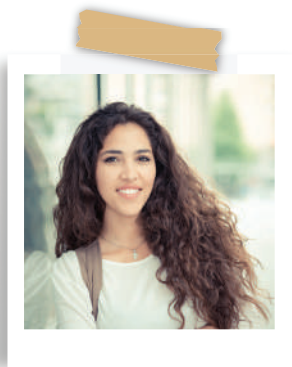
THE POWER YOU NEED THE EXPERIENCE YOU TRUST

FOR YOUR HIGHLY ACTIVE RRMS PATIENTS

33.1%

cumulative probability of 24-week
**CONFIRMED DISABILITY
IMPROVEMENT***
as per TOP 10 years study¹

(n=5179 at baseline; n=28 at year 10)



94%

REDUCTION IN PML RISK^{2,3}
as per the TOUCH registry
(IC 95% : 78-99% [RR : 0.06 ; IC 95% : (0.01-0.22)])

For JCV+ patients, results from the analysis of the TOUCH registry suggest that TYSABRI EID (averaged dosing intervals of approximately **6 weeks**) may be associated with a lower PML risk compared to every-4-week dosing.^{2,3}

85% of the patients had received every-4-week dosing for ≥1 year before switching to the extended interval dosing regimen.^{2,3}

**THE APPROVED DOSE OF TYSABRI IS 300 MG ADMINISTERED
BY IV INFUSION EVERY 4 WEEKS.²**

The efficacy of TYSABRI extended interval dosing has not been established and the associated benefit-risk balance is currently unknown.²

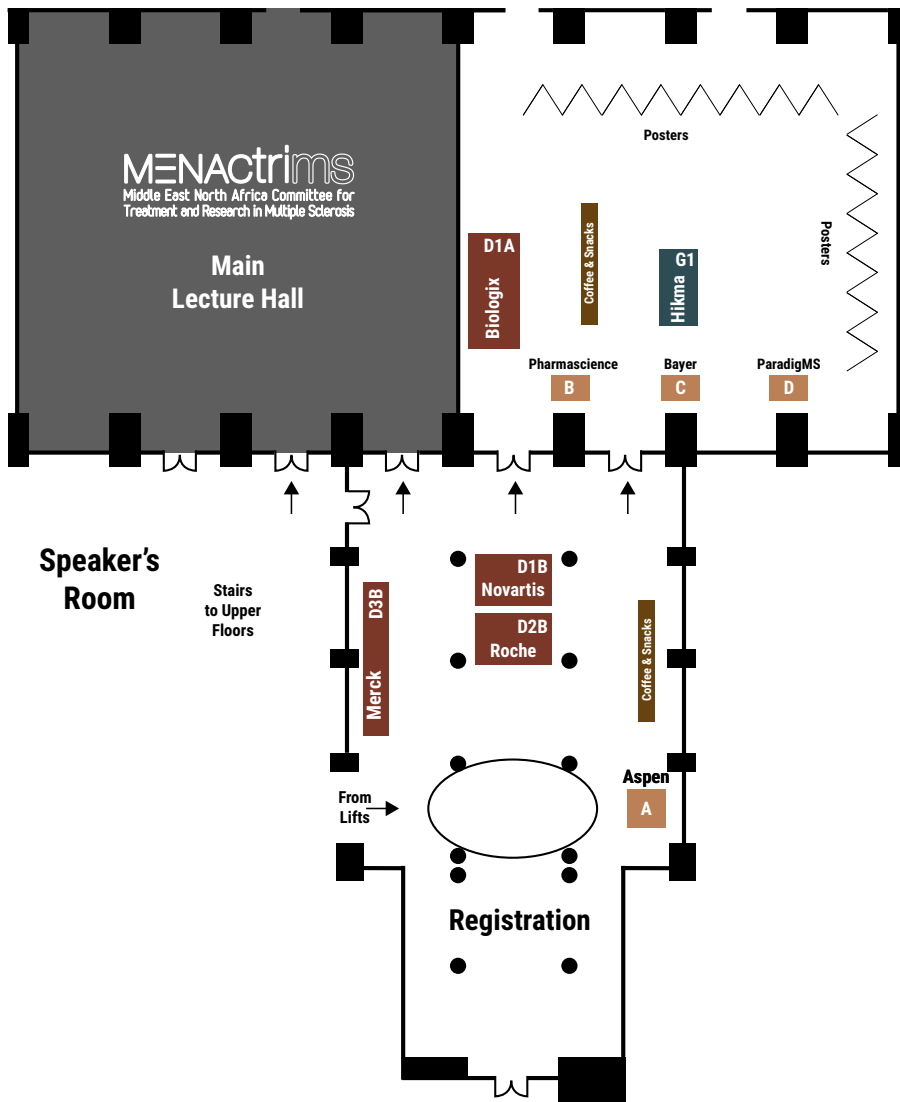
TOP: TYSABRI Observational Program; **EDSS:** Expanded Disability Status Scale; **RRMS:** Relapsing-Remitting Multiple Sclerosis; **TOUCH:** TYSABRI Outreach: Unified Commitment to Health; **PML:** Progressive Multifocal Leukoencephalopathy; **EID:** Extended Interval Dosing

* Disability improvement defined as a decrease of ≥1.0 point from baseline score, confirmed 24 weeks later, among patients with baseline EDSS scores ≥2.0.

References: 1.Bhatkuruvi H, Kappos L, Wiestl H, et al. Long-term safety and effectiveness of natalizumab treatment in clinical practice: 10 years of real-world data from the Tysabri Observational Program (TOP). J Neural Neurosurg Psychiatry. 2019; epub March 2020; doi:10.1136/jnnp-2019-322326.2.Zhovts Ryerson L, Foley J, Cheng L, et al. Risk of natalizumab-associated PML in patients with MS is reduced with extended interval dosing. Neurology. 2019;93(3):e4652-e4662.3. TYSABRI (natalizumab) [summary of product characteristics]. Sanofi date Egger February 21



CONGRESS MAP



This is

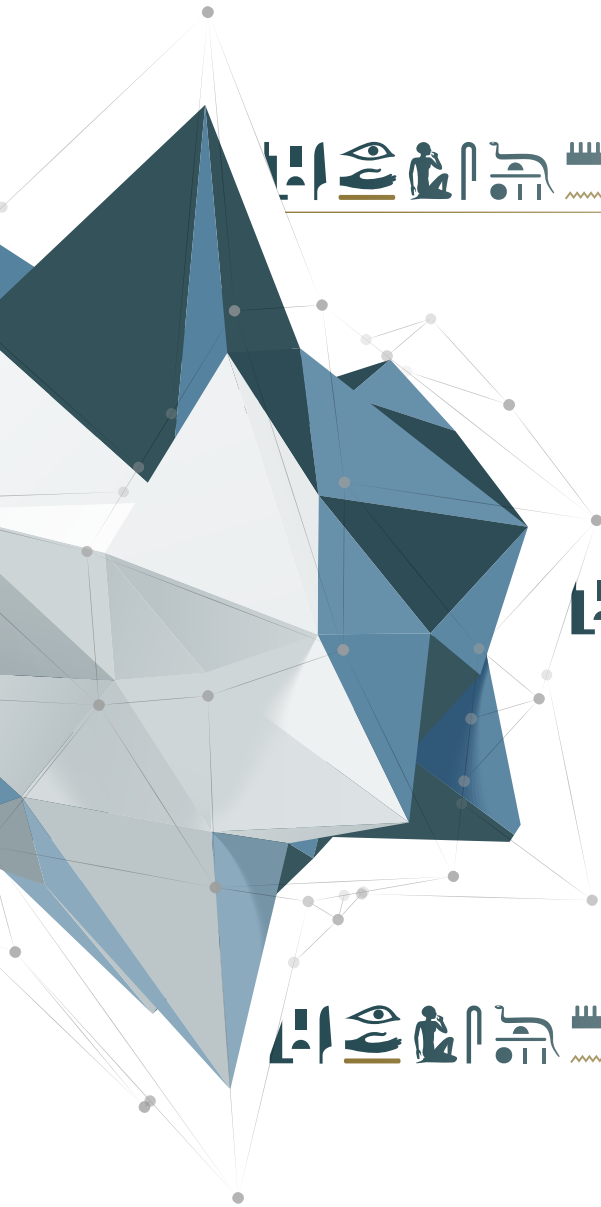
GENERATION

For patients at the start of their MS journey,
where they go depends on where you start



OCREVUS[®]
ocrelizumab 300MG/10ML
INJECTION FOR IV







SCIENTIFIC PROGRAM



SCIENTIFIC PROGRAM



SEVENTH MENACTRIMS CONGRESS FRIDAY, NOVEMBER 11, 2022 MAIN HALL

08:00-09:00 Registration & Morning Coffee

09:00-10:00

Session I: MS and Infections

Chairs: A. Siva (TR), R. Gouider (TN) & S. Hashem (EG)

09:00-09:25

Risk of Infections for MS Disease Modifying Therapies

A. Abulaban (SA)

09:25-09:50

Update on COVID-19 and MS

M.P. Sormani (IT)

09:50-10:00

Panel Discussion

10:00-11:00

Session II: Update on Treatments in MS and NMO

Chairs: X. Montalban (ES), R. Shin (US) & F. Talaat (EG)

10:00-10:25

New Treatments in MS: The BTK inhibitors

X. Montalban (ES)

10:25-10:50

New Approaches to Treatment of NMO

P. Rieckmann (DE)

10:50-11:00

Panel Discussion

11:00-11:30

Satellite Symposium I hosted by Novartis

Chair: M. Zakaria (EG)

11:00-11:30

A Revolutionary Era of Early Intervention with No Compromise

W. Brownlee (UK)

11:30-13:00

Prayer Break and Lunch

13:00-14:15

Session III: Special Populations in MS

Chairs: C. Oreja-Guevara (ES), R. Alroughani (KW) & H. Eltallawy (EG)

13:00-13:20

Women and MS

N. Al Jarki (KW)

13:20-13:40

Radiologically Isolated Syndrome: When to treat?

C. Lebrun-Frenay (FR)

13:40-14:00

Aging in MS: When to stop treatment?

W. Brownlee (UK)

14:00-14:15

Panel Discussion

14:15-14:30

Welcome and Introduction by B. Yamout (AE), President of MENACTRIMS



SEVENTH MENACTRIMS CONGRESS FRIDAY, NOVEMBER 11, 2022 MAIN HALL

14:30-15:00 Satellite Symposium II hosted by Merck <i>Chairs: M. Zakaria (EG) & M. Abdul Naseer (EG)</i>		
14:30-14:45	Early Treatment with MAVENCLAD	G. Giovannoni (UK)
14:45-15:00	Practicalities of MAVENCLAD	J. Oh (CA)
15:00-16:00 Session IV: Guidelines in MS Management <i>Chairs: G. Comi (IT), S. Bohlega (SA) & M. Abdul Naseer (EG)</i>		
15:00-15:25	MENACTRIMS Guidelines for Treatment of MS	N. Shalaby (EG)
15:25-15:50	MAGNIMS Consensus Recommendations on the Use of MRI in MS	N. Di Stefano (IT)
15:50-16:00	Panel Discussion	
16:00-16:30	Coffee Break	
16:30-17:00 Satellite Symposium III hosted Roche <i>Chairs: M. Zakaria (EG) & R. Alroughani (KW)</i>		
16:30-17:00	Addressing Silent MS: Can we improve patients outcomes with early interventions?	D. Ontaneda (US)
17:00-18:00 Session V: Oral Presentations <i>Chairs: R. Alroughani (KW), M. Zakaria (EG) & E. Tag Eldin (EG)</i>		
17:00-17:10	Disease-Modifying Therapies, Outcomes, Risk Factors and Severity of COVID-19 in Multiple Sclerosis: A MENACTRIMS Registry Based Study	M. Zeineddine (LB)
17:10-17:20	Ten Years Natural History of Multiple Sclerosis in Kuwait Population	S.F. Ahmed (KW)
17:20-17:30	New B Cell-Related Markers in MS Diagnosis: The Tunisian Experience	S. Feki (TN)
17:30-17:40	Impact of Gradual Tapering Strategy of Fingolimod on Recurrence of Disease Activity in Patients with MS	H. Elshebawy (EG)
17:40-17:50	Serum Level of Brain-Derived Neurotrophic Factor in Patients with Relapsing Remitting Multiple Sclerosis: A Potential Biomarker for Disease Activity	M.I. Oraby (EG)
17:50-18:00	White Matter Lesion Load and Location in Relation to Cognitive and Physical Dysfunctions in Relapsing Remitting Multiple Sclerosis	M. Y. Ezzeldin (EG)



SCIENTIFIC PROGRAM



SEVENTH MENACTRIMS CONGRESS SATURDAY, NOVEMBER 12, 2022 MAIN HALL

09:00-10:15 Session VI: Biomarkers in MS <i>Chairs: S. Khoury (LB), M. Dahdaleh (JO) & H. Aref (EG)</i>		
09:00-09:20	Iron on Brain MRI: A biomarker of progressive disease?	I. Hamdy (EG)
09:20-09:40	Neurofilaments in MS: Their role in MS treatment and monitoring	J. Oh (CA)
09:40-10:00	New Biomarkers in MS	T. Berger (AT)
10:00-10:15	Panel Discussion	
10:15-10:30	Coffee Break	
10:30-11:00 Satellite Symposium IV hosted by Biologix Natalizumab: Integrating the Evidence to Advance MS Management <i>Chair: M. Abdul Naseer (EG)</i>		
10:30-10:45	Natalizumab: Key advances impacting clinical decisions	M. Zakaria (EG)
10:45-10:55	Advancing MS Care : Updated natalizumab EID data	M.A. Sahraian (IR)
10:55-11:00	Panel Discussion	
11:00-12:15 Session VII: European Charcot Foundation (ECF) Symposium: Epstein-Barr Virus in MS <i>Chairs: J. Inshasi (AE), G. Comi (IT) & C. Lebrun-Frenay (FR)</i>		
11:00-11:20	Epidemiology of EBV in MS: New findings	A. Ascherio (US)
11:20-11:40	Immunopathogenesis: Current theories	F. Aloisi (IT)
11:40-12:00	Potential Therapeutic Interventions	G. Giovannoni (UK)
12:00-12:15	Panel Discussion	
12:15-14:00	Lunch Break	
14:00-15:15 Session VIII: Managing Advanced MS <i>Chairs: M. Al-Jumrah (SA), B. Yamout (AE) & H. Metwally (EG)</i>		
14:00-14:20	Rehabilitation in MS	S. Makkawi (SA)
14:20-14:40	Secondary Progressive MS: Diagnosis, monitoring & treatment	O. Kantarci (US)
14:40-15:00	Stem Cell Therapy in MS	N. Grigoriadis (GR)
15:00-15:15	Panel Discussion	



SEVENTH MENACTRIMS CONGRESS SATURDAY, NOVEMBER 12, 2022 MAIN HALL

15:15-15:30 Coffee Break

15:30-16:45 Session IX: Cognitive and Lifestyle Interventions in MS
Chairs: A. Mahdawi (IQ), M. Zakaria (EG) & A. Soliman (EG)

15:30-15:50 Cognition and Cognitive Rehabilitation in MS G. Macaron (LB)

15:50-16:10 Lifestyle and Exercise Recommendations in MS F. Abdulla (BH)

16:10-16:30 Mental Health in MS A. Gharbi (TN)

16:30-16:45 *Panel Discussion*

16:45-17:30 Closing Ceremony and Awards Presentation



SCIENTIFIC PROGRAM



NURSING SESSION

SATURDAY, NOVEMBER 12, 2022

ABDEEN (LEVEL-3)

09:00-10:45		
Nursing Session I		
Chair: J. Massouh (AE)		
09:00-09:30	The Evolving Role of the MS Nurse	J. Halper (US)
09:30-10:15	Care of People Living with Advanced MS	K. Vernon (UK)
10:15-10:45	Interactive Case Study: Managing Advanced MS	K. Vernon (UK)
10:45-11:00	Coffee Break	
11:00-12:45		
Nursing Session II		
Chair: J. Massouh (AE)		
11:00-11:30	DMTs and Risk of Malignancy	M. Zeineddine (LB)
11:30-12:00	Misdiagnosis of MS	G. Macaron (LB)
12:00-12:45	Interactive Case Studies: Women Issues in MS	N. Al Jarki (KW)
12:45-14:00	Lunch Break	
14:00-14:30		
Nursing Satellite Symposium I hosted by Roche		
14:00-14:30	Transforming Patients' Experience: Can we improve their quality of life?	J. Massouh (AE)
14:30-15:00		
Nursing Satellite Symposium II hosted by Biologix		
14:30-15:00	Factors to Consider When Caring for MS Patients: What the MS nurse needs to know	M. Zeineddine (LB)
15:00-15:30		
Nursing Satellite Symposium III hosted by Novartis		
15:30-16:00	The Value of Specialization for MS Nurses	J. Massouh (AE)
15:30-16:00		
Nursing Satellite Symposium IV hosted by Merck		
15:30-16:00	Improving Quality of Life for MS Patients	J. Massouh (AE)



MSIF SESSION

SATURDAY, NOVEMBER 12, 2022

AL MONTAZA (LEVEL-3)

09:00-10:00		MSIF Session I <i>Chair: A. Ibrahim (UK)</i>
09:00-09:30	How MSIF is Supporting Global MS Research and Access Efforts	M. Sharawy (EG) M. Zakaria (EG)
09:30-10:00	Making DMTs Available and Affordable for All: Egypt's Experience	
10:00-10:15	<i>Panel Discussion</i>	
10:15-10:45	Coffee Break	
10:45-12:00		MSIF Session II <i>Chair: A. Ibrahim (UK)</i>
11:00-11:30	Insights into Advocacy and Research Work being Carried out by MS Organisations in the Region	Representatives from MS organisations in the region R. Alroughani (KW)
11:30-12:00	Key Research Updates from the MENACTRIMS Congress 2022 with Q&A	
12:00-14:00	Lunch Break	
14:00-17:00		Closed Workshop for MS Organisations



NOTES

This image shows a single sheet of white paper with horizontal ruling lines. The lines are evenly spaced and run across the width of the page. There are no margins, text, or other markings on the paper.

Introducing



THE FIRST ORAL DMT WITH SUPERIOR EFFICACY VS. AN ACTIVE ORAL COMPARATOR*^{1,2}

*Over two years in a large (N=1,133) Phase III, multicentre, double-blind, superiority randomised clinical trial vs. teriflunomide 14mg in adult patients with active RMS.^{1,2}

DMT, disease-modifying therapy; RMS, relapsing multiple sclerosis. **References:** 1. European Medicines Agency, Ponesimod Summary of Product Characteristics. Available at: <https://www.ema.europa.eu/en/medicines> Last accessed: October 2022. 2. Kappos L, et al. JAMA Neurol. 2021;78(5):558-567.



PHARMACEUTICAL COMPANIES OF *Johnson & Johnson*

Johnson & Johnson Middle East FZ-LLC
Mohamed Bin Rashid Academic Medical Centre
Building 14, Level 7 - Dubai Healthcare City
Dubai 505080 United Arab Emirates

CP-351979 - Approval date 10-2022

Scan for SmPC







FACULTY PROFILES



FACULTY PROFILES

Prof. Maged Abdel Naseer
Professor of Neurology and Psychology
Cairo University
Cairo, Egypt

Dr. Alberto Ascherio
Professor of Nutrition and Epidemiology
Harvard University
Massachusetts, United States of America

Dr. Fatema Abdulla
Consultant Neurologist
Salmaniya Medical Complex
Manama, Bahrain

Prof. Thomas Berger
Professor of Neurology and Chair, Department of
Neurology
Medical University of Vienna
Vienna, Austria

Dr. Ahmed Abulaban
Consultant Neurologist
National Guard Health Affairs
Riyadh, Saudi Arabia

Prof. Saeed Bohlega
Consultant Neurologist, Professor of Neurology
King Faisal Specialist Hospital and Research
Center
Riyadh, Saudi Arabia

Dr. Namareq Al Jarki
Consultant Neurologist
Kuwait Hospital
Kuwait City, Kuwait

Dr. Wallace Brownlee
Consultant Neurologist
Cleveland Clinic London
London, United Kingdom

Dr. Mohammed Al-Jumrah
Professor and Consultant Neurologist
King Abdullah International Medical Research
Center
Riyadh, Saudi Arabia

Prof. Giancarlo Comi
Professor of Neurology
Vita-Salute San Raffaele University
Milan, Italy

Dr. Francesca Aloisi
Head of Research
Istituto Superiore di Sanità
Rome, Italy

Dr. Maurice Dahdaleh
Consultant Neurologist
Khalidi Hospital and Medical Center
Amman, Jordan

Dr. Raed Alroughani
Consultant Neurologist, Director of MS Clinic
Amiri and Ibn Sina Hospitals
Kuwait City, Kuwait

Prof. Nicola De Stefano
Professor of Neurology
Department of Medicine, Surgery and
Neuroscience, University of Siena
Siena, Italy

FACULTY PROFILES



Dr. Hamdy Eltallawy
Professor of Neurology
Assuit University
Assuit, Egypt

Dr. Eman Hamdy
Professor of Neurology
Alexandria University
Alexandria, Egypt

Prof. Khalid El-Salem
Professor of Neurology
Jordan University of Science and Technology
Amman, Jordan

Prof. Saher Hashem
Professor and Consultant Neurologist, Faculty of
Medicine
University of Cairo
Cairo, Egypt

Dr. Alya Gharbi
Consultant Neurologist
Hopitaux de Tunis
Tunis, Tunisia

Dr. Hussein Mohamed Hussein Metwally
Consultant Neurosurgeon
Cairo University
Cairo, Egypt

Prof. Gavin Giovannoni
Professor of Neurology
Blizard Institute, Barts and The London School
of Medicine and Dentistry
London, United Kingdom

Mr. Abdelfatah Ibrahim
Head of Communications, Campaigns &
Advocacy
MS International Federation
London, United Kingdom

Prof. Riadh Gouider
Consultant Neurologist, Head of Neurology
Department
Razi Hospital
Tunis, Tunisia

Prof. Jihad Inshasi
Consultant Neurologist, Professor of Neurology
Rashid Hospital, Dubai Medical College
Dubai, United Arab Emirates

Prof. Nikolaos Grigoriadis
Head, B' Dept of Neurology, Professor of
Neurology
AHEPA University Hospital, Aristotle University
of Thessaloniki
Thessaloniki, Greece

Dr. Orhun Kantarci
Consultant Neurologist
Mayo Clinic
Rochester, Minnesota, United States of America

Dr. June Halper
Chief Executive Officer (CEO)
Consortium of Multiple Sclerosis Centers
(CMSC), International Organization of MS
Nurses, Multiple Sclerosis Nurses International
Certification Board
New York, United States of America

Dr. Samia Khoury
Director of Abu Haidar Neuroscience Institute
and Nehme and Therese Tohme Multiple
Sclerosis Center
American University of Beirut Medical Center
Beirut, Lebanon



FACULTY PROFILES

Dr. Christine Lebrun-Frenay
Consultant Neurologist & Oncologist
University of Nice
Nice, France

Dr. Jiwon Oh
Medical Director, Associate Professor of
Medicine
Barlo MS Centre, St. Michael's Hospital,
University of Toronto
Toronto, Canada

Dr. Gabrielle Macaron
Consultant Neurologist
Hôtel-Dieu de France
Beirut, Lebanon

Prof. Celia Oreja-Guevara
Consultant Neurologist, Vice Chair of Neurology
University Hospital San Carlos
Madrid, Spain

Dr. Akram Mahdawi
Consultant Neurologist
Baghdad Hospital
Baghdad, Iraq

Prof. Peter Reickmann
Professor of Neurology, Head and Chair,
Department of Neurology, Medical Director
Medical Park Loipl
Bamberg, Germany

Dr. Seraj Makkawi
Consultant Neurologist & Assistant Dean of
Clinical Affairs
Ministry of National Guard Health Affairs & King
Saud Bin Abdulaziz University
Jeddah, Saudi Arabia

Prof. Nevine Shalaby
Consultant Neurologist & Professor of Neurology
Cairo University
Cairo, Egypt

Ms. Joelle Massouh
Clinical Manager
Neurology Institute and MS Center
Harley Street Medical Centre
Abu Dhabi, United Arab Emirates

Prof. Mai Sharawy
Consultant Ophthalmologist, President and Chair
Cairo University, MS International Federation
Cairo, Egypt

Dr. Hany Mohamed Aref
Professor of Neurology
Ain Shams University
Cairo, Egypt

Prof. Robert Shin
Professor of Neurology & Director, Georgetown
Multiple Sclerosis and Neuroimmunology Center
Georgetown University
Washington D.C., United States of America

Prof. Xavier Montalban
Chairman and Director Dept. of Neurology-
Neuroimmunology
Multiple Sclerosis Center of Catalonia, Vall
d'Hebron University Hospital
Barcelona, Spain

Prof. Aksel Siva
Professor of Neurology
Istanbul University Cerrahpaşa School of
Medicine
Istanbul, Turkey

FACULTY PROFILES



Prof. Aly Soliman
Consultant Neurologist
Zagazik University
Zagazig, Egypt

Prof. Bassem I. Yamout
Professor of Neurology, Director, Neurology
Institute
American University of Beirut, Harley Street
Medical Center
Abu Dhabi, United Arab Emirates

Prof. Maria Pia Sormani
Professor of Biostatistics
University of Genoa
Genoa, Italy

Prof. Magd Zakaria
Professor of Neurology
Ain Shams University
Cairo, Egypt

Dr. Elsayed Tag Eldin
Professor of Neurology
Tanta University
Tanta, Egypt

Dr. Maya Zeineddine
PhD Candidate, Limoges University, France
MS Certified Specialist
Executive Secretary, MENACTRIMS
Beirut, Lebanon

Dr. Farouk Talaat
Professor of Neurology
Alexandria University
Alexandria, Egypt

Ms. Karen Vernon
Multiple Sclerosis Clinical Nurse Specialist
Northern Care Alliance (Salford Royal NHS
Foundation Trust)
Manchester, United Kingdom



FACULTY PROFILES



Prof. Maged Abdel Naseer
Professor of Neurology and Psychology
Cairo University
Cairo, Egypt

Finished high school in Cairo 1977. Graduated from Faculty of Medicine – Cairo University (Kasr El Aini School of Medicine) in December 1983. House officer in Faculty of Medicine – Cairo University (1984-1985) Resident in the Neurology Department - Faculty of Medicine – Cairo University (1986-1989) during which he got Master degree of Neurology and Psychiatry. Assistant lecturer of Neurology in Neurology Department - Faculty of Medicine – Cairo University (1989-1994) during which he got Medical Doctorate degree of Neurology.

Lecturer of Neurology in Neurology Department - Faculty of Medicine – Cairo University (1994-1999). Assistant Professor of Neurology in Neurology Department - Faculty of Medicine – Cairo University (1999-2004). Professor of Neurology in Neurology Department - Faculty of Medicine – Cairo University in October 2004. President of Neurology Department - Faculty of Medicine – Cairo University (September 2019-September 2020). Emeritus Head of Neurology Department - Faculty of Medicine – Cairo University



Dr. Fatema Abdulla
Consultant Neurologist
Salmaniya Medical Complex
Manama, Bahrain

Dr Fatema Abdulla is a Consultant Neurologist and Chairperson of Clinical Neurosciences department at the Salmaniya Medical Complex, Government Hospital, Kingdom of Bahrain, she is the President of Bahrain Neuroscience Association. Dr. Fatema Obtained an Associate Degree in Nursing , worked as staff nurse in Intensive care unit. Attended Medical School at the Arabian Gulf University and Completed her Doctor of Medicine and is a Board Certified Arab Board in Internal Medicine and the Canadian Adult Residency Neurology - University of Calgary.

Dr. Abdulla conducted her fellowship in Clinical Epilepsy and Diploma in EEG – Canada. Dr. Abdulla is the General Secretary in ILAE and EMR Executive Board.



FACULTY PROFILES



Dr. Ahmed Abulaban

Consultant Neurologist

National Guard Health Affairs

Riyadh, Saudi Arabia

Dr. Ahmad Abulaban obtained his bachelor's degree in Medicine and Surgery from King Abdulaziz University, Jeddah, Saudi Arabia. He completed his residency training in Adult Neurology in 2015 at King Abdulaziz Medical City-National Guard-Riyadh. He obtained Multiple Sclerosis and Neuroimmunology Fellowship and Clinical Neurophysiology Fellowship in 2019/2020 from Yale University, USA. Dr. Abulaban is duly certified by the American Board of Clinical Neurophysiology. He was appointed as an Assistant Professor at the College of Medicine, King Saud bin Abdulaziz University for Health Sciences, Riyadh, Saudi Arabia, in 2020. He was appointed as a Consultant Neurologist at King Abdulaziz Medical City, Ministry of National Guard-Health Affairs, Riyadh, Saudi Arabia.

Dr. Abulaban is currently the Residency Training Program Director of Adult Neurology and the Neurosciences and Vision Block Coordinator for Undergraduate Students. Also, he has been serving as the Research Officer of the Saudi Multiple Sclerosis Chapter since 2020. He has multiple publications in the field of Multiple Sclerosis and Neuroimmunology. He has numerous research awards.



Dr. Namareq Al Jarki

Consultant Neurologist

Kuwait Hospital

Kuwait City, Kuwait

Dr. Namareq Aljarki is a Specialist Neurologist, and the director of MS clinic at Mubarak Hospital. She received her degree in medicine (MD) from Kuwait University. She completed her Neurology Residency at the Kuwaiti board of neurology. She then completed a fellowship in Multiple Sclerosis at the University of Toronto (Canada).



FACULTY PROFILES



Dr. Mohammed Al-Jumma

Professor and Consultant Neurologist

King Abdullah International Medical Research Center
Riyadh, Saudi Arabia

Dr. Al Jumma is professor of Neurology and obtained his MBBS from King Faisal University while he did his Neurology training and two fellowships at the University of Alberta, Canada. He is a Fellow of the Royal College of Physicians of Canada (FRCPC) obtained in November, 1995 and American Board of Psychiatry and Neurology in November, 1997. Mohammed Al Jumma is an experienced health care leader with wide range of knowledge in the national and regional health care priorities and challenges. As a founding member of the King Abdullah International Medical Research Center (KAIMRC), Dr. Al Jumma was able to successfully lead the establishment of KAIMRC as a model to serve the national and regional health care needs and challenges through translational research.

Dr. Al Jumma has served as a chair or a member of many of the national and institutional committees. He has represented the National Guard Health Care in the National Health Dialog, where the members meet the health care stakeholder across the country. He is also the founding member of the National Committee of Biomedical Ethics. Dr. Al Jumma has provided consultancy services to multiple national agencies and international pharmaceutical industry. As a health care provider, academician and researcher he has broad base of national and international network that has enable him to have an extensive experience in the regional needs challenges and opportunities in health care industries.



Dr. Francesca Aloisi

Head of Research

Istituto Superiore di Sanità

Rome, Italy

Francesca Aloisi is Head of Research and Acting Director of the Department of Neuroscience at Istituto Superiore di Sanità in Rome, Italy. She is a biologist with past research interests in neuropharmacology, neurochemistry, biology of glial cells and neuro-immune interactions. In the past 20 years, she has been involved in investigations on the aetiopathogenesis of multiple sclerosis. In particular, she has coordinated research activities aimed at clarifying the involvement of and interaction between B cells, Epstein-Barr virus and the antiviral immune response in the development of central nervous system inflammation and tissue damage in multiple sclerosis.



FACULTY PROFILES



Dr. Raed Alroughani

Consultant Neurologist, Director of MS Clinic

Amiri and Ibn Sina Hospitals

Kuwait City, Kuwait

Dr. Raed Alroughani is a consultant neurologist and the director of MS clinic at Amiri and Ibn Sina hospitals. He received his degree in medicine (MD) from Charles University. He completed his neurology residency at the University of British Columbia and subsequently obtained the neurology certification from the Royal College of Physicians & Surgeon (Canada). He then completed a fellowship in Multiple Sclerosis at the University of British Columbia.

Dr. Alroughani's fields of interest are principally directed towards the epidemiology and therapeutics of MS. He established the national MS registry and the multi-disciplinary MS clinic in Kuwait. He is actively involved in research and he authored and co-authored more than 100 publications. Dr. Alroughani was awarded the National Prize for scientific production in the field of medical science in 2017 and the best researcher award by Amiri Hospital in 2018.

Dr. Alroughani is a founding member and the secretary general of MENACTRIMS. He is the vice chair of the Scientific Leadership Group of MSBase Foundation and an executive board member of ParadigMS Foundation. He sits on the executive boards of various scientific associations, steering committees and advisory boards, mainly in the field of MS.



Dr. Alberto Ascherio

Professor of Nutrition and Epidemiology

Harvard University

Massachusetts, United States of America

Dr. Alberto Ascherio leads multiple NIH-funded projects involving both national and international collaborations. As PI of these projects, Dr. Ascherio has developed the skills to efficiently manage the multiple steps of scientific research, from study design and budgeting to the publication and dissemination of findings. For the past 25 years, he has directed the investigations of multiple sclerosis (MS), Parkinson's disease (PD) and amyotrophic lateral sclerosis (ALS) in numerous cohorts, and he has been the PI for several research projects on the determinants and biomarkers of PD, MS and ALS risk and progression.

Dr. Ascherio also has experience in clinical trials, as co-PI of a phase 2 and a phase 3 trial in individuals with PD. Most importantly, Dr. Ascherio has established a close network of collaborations and has extensive experience in working with national and international cohorts.



FACULTY PROFILES



Prof. Thomas Berger

Professor of Neurology and Chair, Department of Neurology
Medical University of Vienna
Vienna, Austria

Prof. Thomas Berger, MD, MSc, FEAN, is Professor of Neurology and Chair, Dept. of Neurology, Medical Univ. of Vienna, Austria. Scientific interests concern inflammatory demyelinating CNS disorders, especially clinical and laboratory biomarkers with the aim to aid individualized and personalized approaches in patient care and management. He has so far published > 380 peer-reviewed papers, research letters and invited reviews.

Prof. Berger is currently president of the Austrian Society of Neurology and was recently appointed as member of the Austrian Supreme Public Health Council. Prof. Berger chairs with enthusiasm the Scientific Committee and is Board Member of the European Academy of Neurology.



Prof. Saeed Bohlega

Consultant Neurologist, Professor of Neurology

**King Faisal Specialist Hospital and Research Center
Riyadh, Saudi Arabia**

Prof. Saeed Bohlega obtains his basic medical training at King Saud University and graduated in 1980. Then in 1982, he went to Canada where he did his training in Neurology at University of British Columbia, Vancouver BC. He trained with Professor Don Paty. He develops specialist interest in Multiple Sclerosis and he did sub-specialty training in Neurophysiology. In 1989, he joined as a Consultant Neurologist in the Department of Neurosciences at King Faisal Specialist Hospital and Research Centre and worked as a Consultant and then as a Senior Consultant and appointed as Professor of Neurology at Al Faisal University.

Prof. Bohlega is a member of many prestigious neurological societies like the American Neurological Association and the British Royal College of Physicians and Surgeons. He worked as a Section Head of Neurology then as a Chairman of Department of Neurosciences. Also, he is a founder and a chairperson of the National Saudi Board of Neurology for ten years. He is the chairman of Saudi Multiple Sclerosis Advisory Group. Also, Prof. Bohlega is the President of the Saudi Neurology Society and the President Elect for the PAN Arab Union of Neurological Societies (PAUNS).



FACULTY PROFILES



Dr. Wallace Brownlee
Consultant Neurologist
Cleveland Clinic London
London, United Kingdom

Dr. Wallace Brownlee is a Consultant Neurologist and Honorary Associate Professor of Neurology. He completed Neurology training in Auckland, New Zealand before moving to London to undertake PhD studies. Dr. Brownlee is experienced in all aspects of General Neurology (headache, dizziness, collapses, tremor, weakness, changes in sensation). His major clinical and research interest is multiple sclerosis.

Dr. Brownlee is Clinical Lead for the Multiple Sclerosis Service at the National Hospital for Neurology and Neurosurgery, where he provides clinical leadership for the largest specialist MS team in the UK. He is Academic Director for the Multiple Sclerosis Academy and an Associate Editor of Multiple Sclerosis Journal.



Prof. Giancarlo Comi

Professor of Neurology

Vita-Salute San Raffaele University

Milan, Italy

Prof. Giancarlo Comi is a Professor of Neurology, Chairman of the Department of Neurology, and Director of the Institute of Experimental Neurology at Vita-Salute San Raffaele University, Milan, Italy. He is also President of the European Charcot Foundation (ECF), a member of the Board of Administration of the Italian Multiple Sclerosis Foundation and of the Scientific Committee of Associazione Italiana Sclerosi Multipla, Co-Chair of the Scientific Steering Committee of the Progressive MS Alliance, and a fellow of the European Academy of Neurology (EAN). He has served as a past president of the European Neurology Society, the Italian Society of Clinical Neurophysiology, and the Italian Society of Neurology.

In recent years, Prof. Comi has received the 'Gh. Marinescu' honorary award from the Romanian Society of Neurology, and has been awarded honorary memberships of the Russian Neurological Academic Society, the European Committee for Treatment and Research in Multiple Sclerosis (ECTRIMS), the European Neurological Society (ENS) and the Sociedad Espanola de Neurologia. He also received the Charcot Award for MS Research from the MS International Federation (MSIF) in 2015. Most recently, Professor Comi was awarded the Gold Medal of 'Benemeranza Civica' from the City of Milan.

Prof. Comi has authored and co-authored more than 1000 articles in peer-reviewed journals, and edited several books, with an h-index of 100. He has been the invited speaker for more than 450 conferences, both nationally and internationally. He sits on the executive boards of various scientific associations and on the editorial boards of Clinical Investigation, European Journal of Neurology and Multiple Sclerosis. He is also the Associate Editor of the Neurological Sciences.



FACULTY PROFILES



Dr. Maurice Dahdaleh

Consultant Neurologist

Khalidi Hospital and Medical Center

Amman, Jordan

Dr. Maurice Dahdaleh graduated from Westminster Medical School (Imperial College), London University and did his training in Internal Medicine and Neurology in the United Kingdom. He is a Fellow of the Royal College of Physicians, London. He worked in Jordan at the Jordan University Hospital and Medical School as part-time Lecturer and Consultant Neurologist. He developed several interests in Clinical Neurology mainly Multiple Sclerosis, Cerebrovascular disease and Movement Disorders. He is member of many local, regional and international neurological societies and past Chair of Scientific Committee and President of the Jordanian Neuroscience Society.

In 1994 he introduced beta-interferon 1a for the first time in Jordan on a patient named basis for the treatment of patients with multiple sclerosis. In addition he pioneered the introduction of botulinum toxin in the treatment of focal dystonia and spasticity in the early 1990 and thrombolytic therapy in the management of acute stroke in 1996. From 1998 he worked in the United Kingdom as honorary Consultant Neurologist at St. Mary's Hospital, London. He returned to Amman Jordan in 2008 as Consultant Neurologist mainly in the Private sector with affiliation to Khalidi Hospital Medical Center and the Arab Medical Center. He is a member of many regional advisory boards on multiple sclerosis, co-authored several papers on multiple sclerosis and is a founding member of MENACTRIMS.



Prof. Nicola De Stefano

Professor of Neurology

Department of Medicine, Surgery and Neuroscience,
University of Siena
Siena, Italy

Prof. Nicola De Stefano is full Professor of Neurology at the Department of Medicine, Surgery and Neuroscience, University of Siena, Italy. He is also Head of the NeuroImaging Laboratory in the same Department; and Honorary Visiting Professor, Imperial College London, UK.

Prof. De Stefano graduated with his MD degree from the University of Siena, Italy, and went on to undertake his internship. After successfully completing his residency in neurology, he went on to pursue postgraduate training overseas in Canada (Montreal Neurological Institute, Montreal) before returning to his alma mater where he obtained his PhD. Subsequently, he covered the position of Adjunct Professor at Montreal Neurological Institute, McGill University, Canada for 12 years, until 2012.

Prof. De Stefano's current research interests lie in multiple sclerosis and other neurological diseases involving the brain white matter. In particular, he is a renowned expert on the clinical application of new neuroimaging techniques in brain and muscle of patients with neurological disease.

Prof. De Stefano is a member of several prestigious professional societies and organizations. He co- chaired the MAGNIMS European network for 6 years (2009-2016). He has delivered numerous invited lectures worldwide, and to date, he has published numerous books and book chapters as well as more than 330 papers in prestigious international peer-review publications in the area of multiple sclerosis, neurometabolic disorders and neuroimaging.



FACULTY PROFILES



Dr. Hamdy Eltallawy
Professor of Neurology
Assuit University
Assuit, Egypt

Hamdy Naguib Ahmed Mahmoud El Tallawy, Md Neurology (1987) is a Prof. of Neurology (1997) in the Faculty of Medicine Assiut University, and Chairman of Neurology and Psychiatry Department, Faculty of Medicine Assiut University from 2000-2006. He is the Vice Dean of , Faculty of Medicine Assiut University, for social Services and Environmental Affairs from 2006-2011 and the Chairman of the Egyptian Society of Neurology, Psychiatry and Neurosurgery 2011-2012. Prof. Hamdy was the Chairman of Ethics Committee for medical researches and undergraduate and postgraduate teaching from 2010 -2018, and the current Head of Neuroepidemiology Research Center from 2010 till now, he is also a Supervisor for about 35 Master and 25 MD thesis in the faculties of Medicine, Nursing and Education- Assiut University. He has special interest in Neuroepidemiology and he is the Chairman of two big projects in Al Kharga District New Valley Governorate and Al Qusier city Red Sea Governorate. Prof. Hamdy has more than 40 International published researches, out of them 30 in the field of Neuroepidemiology, and is the Chairman of 3 International Conferences (1st and 2nd Egyptian and 3rd International Neuroepidemiology Conferences).

Prof. Hamdy has received the following prizes, The National Encouraging Prize of Prof. Osama Elwan (1997), the prize of the Ideal Professor (2007), and the Estimation award of Assiut University (2010).



Prof. Khalid El-Salem

Professor of Neurology

Jordan University of Science and Technology
Amman, Jordan

Prof. Khalid El-Salem is Professor of Neurology and the President of Jordan University of Science and Technology (JUST) and the Chairman of the Board of Directors of King Abdulla University Hospital. He graduated with a medical degree from JUST and completed his residency in Neurology at the University of Arkansas for Medical Sciences in the USA, and a fellowship in Clinical Neurophysiology from Duke University Medical Center, USA. He is American Board Certified in Neurology, Clinical Neurophysiology, Electrodiagnostic Medicine, and Neuromuscular Medicine. Prof. El-Salem presented his scientific research in the highest impact conferences in the field, including the American Academy of Neurology and the American Neurological Association, and managed to publish more than 100 articles in the leading journals of neurology and continues to be active in research with multiple on-going institutional, national, and international projects.

Prof. El-Salem established the first neurology residency program in Jordan and the first, and still the only, higher specialty program of neurology at JUST. He also established the first sophisticated neurophysiology laboratory in the country along with peers. Prof. El-Salem was elected as chairman of the scientific committee of the Jordanian Neurological Society for two years, and then elected as the President of the Jordanian Neurological Society (the leading neurology position in Jordan), serving as such for two years.



FACULTY PROFILES



Dr. Alya Gharbi
Consultant Neurologist
Hopitaux de Tunis
Tunis, Tunisia

Dr. Alya Gharbi was born in Tunis, Tunisia and graduated from the French High school Pierre Mendès France of Tunis, Tunisia. She graduated at the Faculty of medicine of Tunis. She did her residency training in the University Hospitals of Tunis. Dr Gharbi obtained her doctor of medicine degree with her thesis "Dementia with Lewy bodies study of a Tunisian cohort" in which she studied the clinical, radiological and genetic features of DLB as well as the factors influencing survival in DLB. During her years of practice, she worked mainly in the Neurology Department of Razi Hospital, including the Alzheimer's center and the MS center, mentored by Professor Riadh Gouider. She also has a further education certificate on "Alzheimer's disease and related disorders". In addition to the clinical research in Neurology, she finished in 2022 the Euro-Mediterranean master's degree in Neuroscience and Biotechnology.



Prof. Gavin Giovannoni

Professor of Neurology

Blizard Institute, Barts and The London School of
Medicine and Dentistry
London, United Kingdom

Prof. Gavin Giovannoni is an academic neurologist based in the Blizard Institute, Barts and The London School of Medicine and Dentistry, Queen Mary University of London. His current research is focused on the Epstein Barr virus as a possible cause of multiple sclerosis, MS-related neurodegeneration, biomarker discovery & validation, and MS clinical outcomes.

Prof. Gavin Giovannoni is a neurologist based in London. His current research and clinical interests are focused on multiple sclerosis. Prof. Giovannoni is also an avid reader, blogger, runner and lover of technology. He has been involved in the development and validation of several innovations to communicate complex information to people with MS and their families. Prof. Giovannoni has a vision of the future where patients and healthcare professionals will meet in a hybrid world that is transformed by technology.



FACULTY PROFILES



Prof. Riadh Gouider

Consultant Neurologist, Head of Neurology Department

Razi Hospital

Tunis, Tunisia

Prof. Riadh Gouider is a Professor of Neurology since 2005. He is Head of Department of Neurology at Razi Hospital since 2002 and the Alzheimer Center since 2010. Prof. Gouider is the President of the Tunisian Society of Neurology since 2014. He is the President of the Pan African Association of Neurological Societies (PAANS) since 2014 and the Vice President of MENACTRIMS (The Middle East and North Africa Committee for Treatment and Research in Multiple Sclerosis) since 2014.

Prof. Gouider is a Founding Member of the Maghrebian Federation of Neurology since 2001. He is Trustee of the World Federation of Neurology (WFN) since 2014 and the Regional Director in the WFN for the Pan African Region since 2012. Prof. Gouider is also a member of Scientific Council of the International Federation of Multiple Sclerosis (MSIF) since 2013 and Vice President of the Scientific Committee of the Tunisian Association of the Multiple Sclerosis (ATSEP) since 2014.



Prof. Nikolaos Grigoriadis

Head, B' Dept of Neurology, Professor of Neurology
AHEPA University Hospital, Aristotle University of
Thessaloniki
Thessaloniki, Greece

Prof. Nikolaos Grigoriadis graduated from the Faculty of Medicine of the Aristotle University of Thessaloniki. He did his PhD thesis and residency in Neurology in the same institution. He has been specialized in clinical and experimental Neuroimmunology and CNS immunopathology in a number of research centers and institutions abroad.

Prof. Grigoriadis is now Professor of Neurology at the Aristotle University of Thessaloniki and Head of the of the B' Dept of Neurology, AHEPA University Hospital, the MS Centre and the Laboratory of Experimental Neurology and Neuroimmunology. He is also Affiliated Researcher at the Institute of Applied Bioscience, Centre for Research and Technology Hellas.

Prof. Grigoriadis is member of various international scientific committees such as the European School of Neuroimmunology, ParadigMS, the subcommittee of ENS for Multiple Sclerosis, the ECTRIMS committee, Co-founder and General Secretary of the Hellenic Academy of Neuroimmunology (www.helani.gr). He is Ex-President and nowadays General Secretary of the Hellenic Neurological Society. He is Ad Hoc reviewer in more than 40 international scientific journals, co-ordinator in more than 50 multicenter clinical trials for MS and principal investigator in collaborative research projects for experimental cell therapies in CNS autoimmune demyelination.

Prof. Grigoriadis's field of interests are: Neuroimmunology; Multiple sclerosis; experimental models of autoimmune diseases: neurodegeneration; immunomodulation; cell therapies. He has published more than 225 papers in peer reviewed journals. He has been awarded several times for his scientific work.



FACULTY PROFILES



Dr. June Halper

Consortium of Multiple Sclerosis Centers (CMSC),
International Organization of MS Nurses, Multiple
Sclerosis Nurses International Certification Board
New York, United States of America

Ms. June Halper is a certified adult nurse practitioner who has specialized in multiple sclerosis for many years. She is the Chief Executive Officer of the Consortium of Multiple Sclerosis Centers (CMSC) and the IOMSN. Ms. Halper has published and lectured extensively on multiple sclerosis and its ramifications. Her numerous publications include Comprehensive Nursing Care in Multiple Sclerosis and Advanced Concepts in Nursing Care in Multiple Sclerosis, co-editor of Staying Well with Multiple Sclerosis: A Self-Care Guide, and co-editor of Nursing Practice in Multiple Sclerosis: A Core Curriculum. She is a member of the American Academy of Nurse Practitioners, the founding director of IOMSN, the International Organization of MS Nurses, and the recipient of the IOMSN's first Ms. June Halper Award for Excellence in Nursing in Multiple Sclerosis. She was inducted as a Fellow into the American Academy of Nursing in November 1999. In 2000, she spearheaded the establishment of the Multiple Sclerosis International Credentialing Board who developed the first international certification examination in multiple sclerosis nursing offered in June 2002 and bi-annually thereafter. As CEO of the CMSC, she initiated the first certification examination for MS specialists in 2004.

As early as 1995, Ms. Halper was involved in the development of clinical practice guidelines in multiple sclerosis which were multi-organization collaborative projects. She was involved in the publication of guidelines in bladder dysfunction in MS, fatigue in MS, spasticity in MS, immunizations in MS, and disease modification in MS. Subsequently the CMSC has adopted a best practices model and Ms. Halper was involved in publication of models of comprehensive care, complex symptomatic management, and cognition to name a few publications. (please visit www.ms-care.org for a full listing)

The NARCOMS and NARCRMS patient registries were established under Ms. Halper's leadership and support. Both have become sources of information about epidemiologic information about multiple sclerosis.



Dr. Eman Hamdy
Professor of Neurology
Alexandria University
Alexandria, Egypt

Eman Hamdy is a Lecturer of Neurology at Alexandria University in Egypt, and a Consultant Neurologist of Multiple Sclerosis and Demyelinating disorders.



FACULTY PROFILES



Prof. Saher Hashem

Professor and Consultant Neurologist, Faculty of Medicine
University of Cairo
Cairo, Egypt

Saher Hashem graduated from faculty of medicine at Cairo university MBBCH . Honors in the year 1967 and master of neuro psychiatry honors 1972 and neurology doctorate Cairo 1976 where he assigned as lecturer of neurology art Cairo University School of Medicine Kasr Alainy.

Prof. Hashem had 2 years post-doctoral training as research fellow in the USA in the years 1976 to 1978 in the field of stroke experimental and sonography and shared the modification of transcranial Doppler with Prof. James f tool in Winston Salem Wake Forest University.

Prof. Hashem assigned as assistant Prof. in neurology in the year 1981 where he started his interest in multiple sclerosis lecturing and helped in introducing the first MRI in Egypt in private practice and one of the steering committee of Cairo scan group. Prof. Saher received degree of Prof. Essor of neurology at Cairo University Kasr Alainy School of Medicine in 1986 till now and president of the department of neurology Cairo university till the year 2005 Nd president of the Egyptian society of neurology neurosurgery and psychiatry 2005–2007 and president of the pan Arab association for neuroscience from year 2007–2009 and was appointed as head of neurology department in Benha University as well as Cairo University. In the year 2003 he with Prof. Farouk Talaat from Alexandria initiated the first Egyptian society for MS and he is the president of this society up till now. He is in the editorial board of JAMA neurology and chief editor of the Egyptian journal of neurology neuropsychiatry and psychiatry. He lectured everywhere in Egypt, Dubai, Saudi Arabia, Kuwait ,in different neurology aspects as well wrote over 50 articles in EJNNP ,add other international journals and supervised more the 60 master and doctorate thesis.

Prof. Hashem also shared international drug trials on DMD drugs in phase 3 used in treatment of MS.



Dr. Hussein Mohamed Hussein Metwally

Consultant Neurosurgeon

Cairo University

Cairo, Egypt

Prof. Hussein Mohamed Hussein Metwally, is a Professor of Neurology, Faculty of Medicine, Al-Azhar University. He is currently the Head of Neurology Department at the Armed Forces College, and the Head of Neurology Department, Cairo Fatemic Hospital. Prof . Hussein is the former President of Egyptian Society of Neurology, Psychiatry and Neurosurgery, and the former Head of Neurology Department , Faculty of Medicine , Al-Azhar University, and the former Hospital Director of Al-Hussein University Hospital.



FACULTY PROFILES



Mr. Abdelfatah Ibrahim

Head of Communications, Campaigns & Advocacy

MS International Federation

London, United Kingdom

As Head of Communications, Campaigns & Advocacy at the MS International Federation (MSIF), a unique global network of MS organizations, their volunteers and staff and people affected by MS from around the world, Abdelfatah and his team produce resources, design and run global campaigns like World MS Day and engage the global MS movement in MSIF's access to healthcare work.

Before his current role, he worked with MS organizations in MENA and Asia, encouraging them to exceed their potential and supporting them to improve the quality of life of people with and affected by MS in their countries.

With over 13 years of experience in the international development and civil society sectors, Abdelfatah has used his expertise in advocacy, campaigning and organizational development to successfully develop and implement healthcare and disability campaigns advocating for social justice and advancing the right to healthcare, including access to affordable treatments, inclusive policies and tax reforms.

Abdelfatah has a Master's degree in International Development from the University of Birmingham, United Kingdom.



Prof. Jihad Inshasi

Consultant Neurologist, Professor of Neurology

Rashid Hospital, Dubai Medical College

Dubai, United Arab Emirates

Prof. Jihad Inshasi is a Consultant Neurologist at Rashid Hospital, Dubai Health Authority (DHA), and a Professor of Neurology at Dubai Medical College (DMC/DHA). He developed and currently directs the Multiple Sclerosis and the Dystonia Clinics at Rashid Hospital/DHA.

Prof. Inshasi is the Head of the Scientific Committee and a Founding and Board Member of the Emirates Neurology Society (EMINS/EMA). With the EMINS Board Members, he has organized numerous neurology meetings, particularly in the field of multiple sclerosis. He is founding and executive board member of the MENACTRIMS. He is also a Founding Member, and ex-President of the Emirates League against Epilepsy (ILAE). He is a member of the medical advisory committee of the recently established National MS Society (NMSS).

Prof. Inshasi has authored and co-authored many scientific papers published in peer-reviewed journals. He has participated as principle and leading investigator in phase 2, 3 & 4 drug trials and has conducted an array of research projects in the field of multiple sclerosis.

Prof. Inshasi is a member of several local, regional and international associations, societies and advisory boards committees. He is a member and Fellow of the American Academy of Neurology (FAAN) and a member and Fellow of the European Academy of neurology (FEAN)



FACULTY PROFILES



Dr. Orhun Kantarci

Consultant Neurologist

Mayo Clinic

Rochester, Minnesota, United States of America

Dr. Orhun H Kantarci, M.D. a nationally recognized multiple sclerosis expert. He received the distinguished NATO science fellowship award (1998) and the National Multiple Sclerosis (MS) Society Advanced Fellowship award (1999) to complete his post-graduate training and extend his work on genetic determinants of the natural history of MS. Dr. Kantarci's research before and during this time resulted in further establishing the direction of genetic epidemiology studies in MS towards understanding the genetic determinants of long-term outcome in MS as opposed to studying the determinants of susceptibility in MS. This body of work was awarded the Department of Neurology Research Award in clinical neurology as a fellow of the Mayo Graduate School of Medicine, Mayo Clinic and Foundation in 2002.

Dr. Kantarci's further research on inheritance of MS in multigenerational families with MS at Mayo Clinic in collaboration with colleagues in UCSF has pointed out the significant epigenetic component of inheritance in MS. This original study was awarded the prestigious Founders Award by the American Academy of Neurology (2005). This study has since provoked multiple publications by others in this area in high impact journals leading to an invited editorial by Dr. Kantarci in the journal "Neurology" (2008). To further his work in this area, Dr. Kantarci was awarded a CR20 award (2008-active) by the Center for Translational Science Activities (CTSA) to study "gender dependent epigenetic regulation of IFNG in multiple sclerosis".

Results from this study has for the first time shown an interaction of gender and age in determining methylation-based regulation of IFNG. The results are going to be first presented in the upcoming meeting of the American Neurological Society in San Francisco (2010) and the manuscript is under preparation. He currently serves in the administrative committee of the newly established "Center for Multiple Sclerosis and Central Nervous System Demyelinating Diseases for Research and Therapeutics at the Mayo Clinic" (2009). His work is in complete alignment with the goals of the "Center" led by Dr. Moses Rodriguez, research priorities of the Department of Neurology and the institutional mission of the Mayo Clinic. His goals of understanding the gender dependent genetic and epigenetic determinants of outcome phenotypes of progression in MS is a core individualized medicine concept.

Dr. Kantarci currently is actively interested in translational research to synergize his clinical, genetic, epigenetic epidemiology work in MS with the genetic determinants of outcome of progressive neurological decline in a viral model of MS. This model in mice using Theiler's Murine Encephalitis virus (TMEV) has been pioneered by Dr. Moses Rodriguez and Dr. Allan Bieber.



Dr. Samia Khoury

Director of Abu Haidar Neuroscience Institute and Nehme and Therese Tohme Multiple Sclerosis Center
American University of Beirut Medical Center
Beirut, Lebanon

Dr. Samia J. Khoury is the Director of the Abu Haidar Neuroscience Institute, and the Director of the new AUBMC Multiple Sclerosis (MS) Center at AUBMC in Beirut, the first MS center in the region. She is a professor of neurology and immunology at the American University of Beirut. She is a professor of Neurology and Immunology at the American University of Beirut. Until 2013 she was the Jack, Sadie, and David Breakstone professor of Neurology at Harvard Medical School and served as the co-Director of the Partners Multiple Sclerosis Center, Boston since 2001. In 2007, Dr. Khoury was awarded the prestigious Kuwait Prize for Sciences by the Kuwait Foundation for the Advancement of Sciences for her work in immunology.

Dr. Samia Khoury received her Medical Diploma from the American University of Beirut, Lebanon, in 1984 having been elected to the Alpha Omega Alpha Honor Medical Society in 1983. She completed her neurology residency at the Case Western Reserve University Hospitals in Cleveland, Ohio and her fellowship at the Brigham and Women's Hospital Center for Neurologic Diseases.

Dr. Samia Khoury is recognized as a world leader in MS, a disease that affect individuals in their prime and can lead to severe disability. She has published over 200 scholarly articles, reviews, and book chapters. Dr. Khoury's research is focused on understanding the pathogenesis and mechanism of immune regulation/tolerance in multiple sclerosis. She is also involved in multiple sclerosis clinical trials and investigation of multiple sclerosis biomarkers.



FACULTY PROFILES



Dr. Christine Lebrun-Frenay
Consultant Neurologist & Oncologist
University of Nice
Nice, France

Dr. Christine Lebrun-Frenay, MD PhD, FAAN, is a Neurologist and Oncologist. She is head in inflammatory neurological disorders clinical research unit and MS center in the university Nice (South East of France) hospital. She is a member of the French Neurological Society, French MS Society (SFSEP), in which she was president and of European and American academies of Neurology. In 2008, she described the first cohort of a subclinical form of MS and subsequently co-founded with American, European, and Turkish colleagues the RIS Consortium which expanded worldwide to collect a unique extensive patients cohort. Her particular research interest includes therapeutical and MRI studies in MS with a specific implication in the description of Radiologically Isolated Syndrome (RIS).

Dr. Christine Lebrun-Frenay is the co editor of recommendations in MS for the French MS Society (vaccines, infections and DMTs). She is participating in numerous clinical trials and research studies with international publications in neuroinflammatory diseases. She is a member of several editorial boards of scientific journals, scientific boards and involved in medical evaluations for MS patients' associations.

Dr. Christine Lebrun-Frenay has been nominated in 2018 for the executive committee of theECTRIMS, the French Association for MS research (ARSEP) and in 2020 the excellence price of the Cote d'Azur University and president of the French MS observatory scientific committee (OFSEP).



Dr. Gabrielle Macaron

Consultant Neurologist

Hôtel-Dieu de France

Beirut, Lebanon

Dr. Gabrielle Macaron, MD is currently a staff Neurologist at Hotel Dieu de France hospital affiliated to Université Saint Joseph in Beirut, Lebanon, instructor in Neurology at the faculty of Medicine at the Saint Joseph University, Beirut, Lebanon, and an adjunct staff at the Mellen Center for Multiple Sclerosis Treatment and Research at the Cleveland Clinic, Cleveland, USA.

She received her doctor of medicine diploma from the Université Saint Joseph in Beirut. She completed her Neurology residency at Hotel Dieu de France in Beirut and La Pitié-Salpêtrière in Paris. She then completed her Neuroimmunology fellowship at the Cleveland Clinic. She will be joining the MS team at the CHUM, Montreal in the next month.

Dr. Macaron mainly focuses on clinical care of patients with multiple sclerosis, and related autoimmune diseases of the central nervous system. Her research interests are focused on neuro-performance measures and technology-enabled data capture in MS, particularly cognitive function. Dr. Macaron was the recipient of a National Multiple Sclerosis Society Institutional Clinician Training Award ICT 0002. She has received young investigator awards at theECTRIMS in 2018 and 2019, best poster finalist at ACTRIMS in 2019, and received the first prize for best presentation at MENACTRIMS in 2019. She is the author of several publication in the field of MS and particularly cognition.



FACULTY PROFILES



Dr. Akram Mahdawi

Consultant Neurologist

Baghdad Hospital

Baghdad, Iraq

Professor Akram Al-Mahdawi CABM, MRCP, FRCP Edin Consultant Neurologist, Head of Iraqi Neurological Council, Baghdad Teaching Hospital/Neurology Unit. He Graduated from BASRA College of medicine in 1983, and completed his post graduate training in internal medicine and gained both diploma of medicine and board certificate of Arabic board of medicine in 1990, MRCP of London then FRCP of both London and Edinburgh. Prof. Akram is a Professor of Neurology in Baghdad College of Medicine and Al-Mustansiria College of Medicine, and a Consultant Neurologist in Baghdad Teaching hospital.

Dr. Akram is the Chairman of Iraqi Neurology Council /Iraqi Board for Medical Specialization, and the Chairman of Iraqi Neurology Society. He is a Member of AAN, the Iraqi representative in WFN, and Arabic Neurology Council, and a Member of Movement Disorder Society. He published 32 papers in different fields of medicine in different medical journals, and is a supervisor of 8 MSC and 6 PHD doctorate dissertations.



Dr. Seraj Makkawi

Consultant Neurologist & Assistant Dean of Clinical Affairs

**Ministry of National Guard Health Affairs & King Saud Bin Abdulaziz University
Jeddah, Saudi Arabia**

Dr. Seraj Makkawi obtained his bachelor degree of Medicine and Surgery in 2009 from Umm Al-Qura University, Makkah, Saudi Arabia. He completed his residency training in Adult Neurology in 2016, Multiple Sclerosis and Neuroimmunology Fellowship in 2017, Neurophysiology Fellowship in 2018, and Master Degree in Medical Education in 2018 from the University of Calgary, Canada. Dr. Makkawi is duly certified in Adult Neurology by the Royal College of Physicians and Surgeons of Canada (2016) and the American Board of Psychiatry and Neurology (2017). He worked as a Locum Neurologist and Clinical Lecturer at the University of Calgary in Canada from 2018 to 2019. He was appointed as an Assistant Professor at the College of Medicine, King Saud bin Abdulaziz University for Health Sciences, Jeddah, Saudi Arabia, in 2019.

Also, he was appointed as Consultant Neurologist at King Abdulaziz Medical City, Ministry of National Guard-Health Affairs, Jeddah, Saudi Arabia. He is currently the Residency Training Program Director of Adult Neurology and the Neurosciences and Vision Block Coordinator for Undergraduate Students since 2020, as well as the Assistant Dean of Clinical Affairs since 2021 at King Saud bin Abdulaziz University for Health Sciences, Jeddah, Saudi Arabia. Also, he has been serving as the Academic Officer of the Saudi Multiple Sclerosis Chapter since 2020. He has multiple publications in the field of Multiple Sclerosis and Neuroimmunology.



FACULTY PROFILES



Ms. Joelle Massouh

Multiple Sclerosis Certified Specialist

Harley Street Medical Centre

Abu Dhabi, United Arab Emirates

Joelle Massouh is currently the Clinical Manager of the Neurology Institute and the MS Center at Harley Street Medical Center, Abu Dhabi, UAE.

Previously, she was the Nurse in Charge at the AUBMC MS Center in Beirut, Lebanon for more than 10 years. She is the first nurse and healthcare professional in the Middle East to be double certified as a Multiple Sclerosis Certified Nurse and a Multiple Sclerosis Certified Specialist. She is a member of the International Organization of Multiple Sclerosis Nurses (IOMSN) and a board member representing the Middle East on the Multiple Sclerosis Nurses International Certification Board (MSNICB), which was established to develop criteria for certification and recertification and administer the certification examination for MS Nurses.

Ms. Massouh is also the Nursing Program Coordinator of the Middle East North Africa Committee for Treatment and Research in MS (MENACTRIMS), responsible for organizing the nursing session annually at the MENACTRIMS congress, with a mission of advancing the specialty of MS nursing in the MENA region.

In 2022, she was invited to become a member of the Medical Advisory Committee of the newly-launched National Multiple Sclerosis Society of the UAE.

In 2019, she was awarded the Inaugural International MS nursing leadership award by IOMSN at the annual Consortium of Multiple Sclerosis Centers (CMSC) congress in USA, an award given for the first time.

She has led many multidisciplinary and nursing Continuing Medical Education programs in Lebanon and the region and has supported nurses and healthcare providers (including physicians and pharmacists) to attain international certification in MS. She also lectures about MS to graduate students, patients, and the community. She has participated in writing articles and book chapters on MS and MS nurses. Her research interests include studying resilience in people living with MS.



Dr. Hany Mohamed Aref

Professor of Neurology

Ain Shams University

Cairo, Egypt

Professor of Neurology Ain Shams University and General Secretary of Egyptian Society of Neurology, Psychiatry and Neurosurgery Board Member of Pan Arab Union on Neurological Societies Treasurer of Pan Arab Union on Neurological Societies Fellow of American Academy of Neurology (FAAN) Fellow of the European Stroke Organization (FESO) Member of European Academy of Neurology Member of editorial board of the European Journal of Neurology Member of the scientific committee of MENACTRMS General secretary of MENASO (Middle East and North Africa Stroke Society) Advisory board Member of the WSO future stroke leader task force He published more than 100 papers in peer reviewed journals



FACULTY PROFILES



Prof. Xavier Montalban

Chairman and Director Dept. of Neurology-
Neuroimmunology

Multiple Sclerosis Center of Catalonia, Vall d'Hebron
University Hospital
Barcelona, Spain

Prof. Xavier Montalban is chair of the Department of Neurology and director of the Multiple Sclerosis Centre of Catalonia (Cemcat) at Vall d'Hebron University Hospital in Barcelona, as well as the chief of the Neuroimmunology Research Group at Vall d'Hebron Research Institute (VHIR). Prof. Montalban is Professor of Neurology at the Autonomous University of Barcelona (UAB) since 2006 and at the University of Vic - Central University of Catalonia (UVic-UCC) since 2021. From July 2017 to May 2020, he was Professor of Medicine and director of the Division of Neurology at the University of Toronto and Director of the MS Centre at St Michael's Hospital.

Prof. Montalban received his medical license, trained as a Neurology specialist and completed his PhD in neuroimmunology at the Universitat Autònoma de Barcelona. He went on to undertake a postdoctoral fellowship at the Lupus Research Institute, Guy's & St. Thomas' Hospital with additional clinical training at the National Hospital for Neurology and Neurosurgery, Queen Square in London, United Kingdom. Prof. Montalban is the President of the Cemcat Foundation and former President and current Honorary Member of the Council of the European Committee for Treatment and Research in Multiple Sclerosis (ECTRIMS). He is the vice-chair of ECTRIMS & National MS Society Clinical Trials Committee and has been chair of the Medical & Scientific Board of the Multiple Sclerosis International Federation (MSIF). He is a Board member of the European Charcot Foundation and of the international initiative PROMS. Prof. Montalban is a fellow member of the American Academy of Neurology (AAN), the European Academy of Neurology (EAN) and the Canadian Academy of Health Sciences (CAHS). For the past twenty-five years, Prof. Montalban has been in the inception phases and on steering committees of many clinical trials related to multiple sclerosis. He has authored over 750 original and revision publications in international peer-reviewed journals plus several book chapters with over 47,000 citations. He has been awarded with the "Highly Cited Researcher" in 2018, 2019, 2020 and 2021. His Scopus H-Index is 94. Prof. Montalban has been the Principal Investigator (PI) or Collaborator in more than 35 competitive Projects and have participated as PI in more than 150 clinical trials. He has also supervised more than 30 doctoral theses. Among the awards received, it is worth highlighting the 2022 John Dystel Prize, awarded jointly by the National Multiple Sclerosis Society and the American Academy of Neurology.

Prof. Montalban has been editor for the Clinical Cases Section of the Multiple Sclerosis Journal. Recently, he co-directed the development of the first ECTRIMS-EAN Multiple Sclerosis Treatment Guidelines. Prof. Montalban research interests include clinical trials, clinical aspects of MS, MR imaging and biological prognostic factors of disease evolution and treatment response, immunological mechanisms of the disease and other aspects of clinical management of MS. He has been exposed to a vast variety of neurological diseases in both sides of the Atlantic.



Dr. Jiwon Oh

Medical Director, Associate Professor of Medicine
Barlo MS Centre, St. Michael's Hospital, University of
Toronto
Toronto, Canada

Dr. Jiwon Oh is a staff neurologist, scientist, and Medical Director of the Barlo Multiple Sclerosis (MS) Program at St. Michael's Hospital, University of Toronto and specializes in the care of people living with MS. Dr. Oh's research focuses on developing advanced MRI techniques in the spinal cord and brain for use in clinical settings. She leads the MRI research program at St. Michael's Hospital, and is the principal investigator on numerous local and multi-center collaborative studies, including the Canadian Prospective Cohort Study to Understand Progression in MS (CanProCo), which is a national prospective cohort study designed to better understand progression in MS.

Dr. Oh is also the Secretary and an Executive Committee member of the North American Imaging in MS Cooperative (NAIMS) representing a multi-national collaborative MRI research endeavor in MS with over 35 sites in North America. She is deeply committed to caring for people with MS, educating future generations of clinicians and scientists, and contributing to scientific developments that will drive the field forward.



FACULTY PROFILES



Prof. Celia Oreja-Guevara

Consultant Neurologist, Vice Chair of Neurology
University Hospital San Carlos
Madrid, Spain

Prof. Celia Oreja-Guevara is Vice Chair of Neurology at the University Hospital San Carlos and Professor of Neurology at the University Complutense, Madrid, Spain. After gaining her medical degree from the University of Madrid, Prof. Oreja Guevara completed her PhD thesis in Neuroimmunology at the Max Planck Institute of Neurobiology, Munich, Germany. Prof. Oreja Guevara then completed a residency in the Department of Neurology at the University of Bochum, Germany, followed by a one-year fellowship in neuroimaging at the University Hospital San Raffaele, Milan, Italy. Since then, Prof. Oreja Guevara has held several posts, including: Senior Neurologist at the University of Dusseldorf, Germany, Head of Neurology, Hospital de Fuenlabrada and Chair of the Multiple Sclerosis Center, University Hospital La Paz, both in Madrid, Spain.

Prof. Oreja Guevara's main areas of research interest are clinical and neuroimaging correlations in MS, family planning, the use of optical coherence tomography symptomatic therapy, neuromyelitis optica (NMO), and the evaluation of new drugs for the treatment of MS and NMO. She is Co-Chair of the Multiple Sclerosis Panel of the European Academy of Neurology and also a member of the Education Committee of the EAN and serves as an expert for the Scientific Advisory Group on Neurology of the European Medicines Agency. In addition, Prof. Oreja Guevara has held leadership positions in a number of national organizations and academic societies, including the Demyelinating Diseases Group and the Neuroimaging Group of the Spanish Neurological Society. She has participated as a principal investigator in several MS and NMO clinical trials.



Prof. Peter Rieckmann

Professor of Neurology, Head and Chair, Department of Neurology, Medical Director

**Medical Park Loipl
Bamberg, Germany**

Prof. Peter Rieckmann received his medical degree from the University of Göttingen, Germany in 1988. After a postdoctoral fellowship in molecular immunology at the NIH, Bethesda, USA he completed his training in Neurology at the National Institute for Nervous Disease, London, UK and the University of Göttingen, Germany. Prof. Rieckmann received German Board certification in Neurology in 1995. His academic and clinical positions have included Senior (staff) Neurologist and Professor for Neurology, Dept. of Neurology, as well as head of the Clinical Research Group for Multiple Sclerosis and Neuroimmunology, at the Julius-Maximilians University of Würzburg. In 2007 Prof. Rieckmann became the Multiple Sclerosis Society of Canada Research Chair and Director of the MS Program and Full Tenured Professor at the University of British Columbia, Vancouver, Canada. Under his leadership the Vancouver MS clinical research program was awarded Western-Pacific Research and Training Center by the MS Society of Canada. He is a founding member of the EndMS campaign in Canada and was instrumental in establishing the Center for Brain Health at UBC in Vancouver (<http://www.centreforbrainhealth.ca>).

In September 2009 he started a new position as Chair of the Department of Neurology at the Academic Hospital in Bamberg, and Professor of Neurology at the University of Erlangen, Germany. Since 2012 he also serves as deputy medical director of the Academic Hospital in Bamberg. In the same year he started the MS in the 21st century steering group, a think tank of international experts and people with MS working on innovative principles of MS care and patient engagement. Together with colleagues from cardiology, psychiatry, neurosurgery, vascular medicine and neuroradiology he raised funds for Germany's first Heart and Brain Center, which started its operation in December 2016 at Bamberg Academic Hospital. He was also the first acting director of this innovative, interdisciplinary center.

Recently, Prof. Rieckmann became medical director and head of the Hospital for Nervous diseases at Medical Park Loipl/Bavaria to establish in cooperation with the Paracelsus Medical University in Salzburg (Austria) innovative concepts of neurorehabilitation. His major research interests are disease modifying factors and repair mechanisms in multiple sclerosis and stroke as well as improvement of rehabilitation strategies to facilitate plasticity and functional restoration. Prof. Rieckmann's clinical goals include enhancing awareness and education about MS and stroke, developing effective and properly resourced services for care (including digital remote monitoring), and providing more customized treatments.

As a clinician scientist he is actively involved in different efforts to transfer bench results to clinical developments and serves on steering committees and advisory boards of various investigator initiated MS trials and international multi-centre studies.



FACULTY PROFILES



Prof. Nevine Shalaby

Consultant Neurologist & Professor of Neurology

Cairo University

Cairo, Egypt

Dr. Nevine Shalaby is a Professor of Neurology at Cairo University from November 2014- Present. Co-founder and former director of Kasr Al Ainy multiple sclerosis clinic, Cairo University hospitals. She is the General Secretary of the Egyptian chapter of Multiple Sclerosis of the Egyptian Society of Neurology, Neuropsychiatry and Neurosurgery (ESNPN). She Received her M.B., B.CH (Signed Excellent with Honor) from Cairo University in 1994.

Dr. Shalaby received her Master Degree in Neuropsychiatry, Cairo University, 1999, and Medical Doctorate of Neurology in 2004, Cairo University. She Has many national and international publications, and is a Speaker and co-chair in many MS dedicated national, regional and international congresses, and the Egypt representative in the MSIF.



Prof. Mai Sharawy

**Consultant Ophthalmologist, President and Chair
Cairo University, MS International Federation
Cairo, Egypt**

A neuro-ophthalmology specialist at Cairo University, Prof. Dr. Sharawy has worked for many years with people with and affected by MS, co-founding the MS Care Society Egypt in 2011.

The Society, for which she is currently a Board Member, has since grown to support some 30,000 people affected by MS in the country. Together with other health professionals, the Society has fought to achieve full coverage of DMTs in Egypt and the inclusion of people with MS within the social and financial support systems.

Prof. Dr. Sharawy is currently President and Chair of the MS International Federation (MSIF), a role she has held since 2019. MSIF is a unique global network of MS organizations, their staff and volunteers and people affected by MS from around the world. It works to strengthen those organizations in countries where there is little support for people with MS, campaign for increased awareness of the disease, provide information to members and support international research into better treatments and ways to manage the disease.

Through collaboration and sharing expertise, resources and skills, Prof. Dr. Sharawy is committed to leading the MSIF and engaging with the wider MS movement to positively change the lives of people affected by MS across the globe.



FACULTY PROFILES



Prof. Robert Shin

Professor of Neurology & Director, Georgetown Multiple Sclerosis and Neuroimmunology Center

Georgetown University

Washington D.C, United States of America

Prof. Robert K Shin, MD, FANA, FAAN, is a graduate of Yale University and received his medical degree from the University of Pennsylvania School of Medicine. He completed a neurology residency and fellowships in neuro-ophthalmology and multiple sclerosis at the Hospital of the University of Pennsylvania.

Prof. Shin is currently Professor of Neurology at MedStar Georgetown University Hospital and Director of the Georgetown Multiple Sclerosis and Neuroimmunology Center. Prof. Shin has a special interest in health disparities in multiple sclerosis (MS) as well as visual problems associated with MS and other demyelinating disorders, including neuromyelitis optica spectrum disorder (NMOSD).



Prof. Aksel Siva

Professor of Neurology

Istanbul University Cerrahpaşa School of Medicine
Istanbul, Turkey

Prof. Aksel Siva graduated from the Istanbul University Cerrahpaşa School of Medicine and completed his residency in neurology in the same institution. He currently works as Professor of Neurology at the Department of Neurology of Istanbul University Cerrahpaşa School of Medicine; where he was the past-chairman and the head of the Clinical Neuro-immunology Unit & Multiple Sclerosis Clinic.

Prof. Siva served as President of The Turkish Neurological Society for 3 consecutive terms between 2003 and 2009. He is a founding member of The Turkish Multiple Sclerosis Society (1989) and served as an Executive Committee member of ECTRIMS between 2003-2006 and of The European Neurological Society between 2009–2014. He was a member of the European Academy of Neurology (EAN) scientific program committee between 2014–2018 and was elected as a Fellow of The EAN in 2015. He had been a member of the Education Executive Committee of The World Federation of Neurology between 2002-2010 and then was appointed as chair of the WFN Standards & Evaluations Committee until 2018.

Prof. Siva is among the founders of the Radiologically Isolated Syndrome Consortium and currently a member of its core group. He is a member of the The Guthy-Jackson Charitable Foundation International Clinical Consortium since 2018. He was the recipient of the Istanbul Medical Association's prestigious "Turkan Saylan Medical Science Award" in 2021 for people who had contributed significantly to medical sciences.

Prof. Siva areas of interest and research are: Clinical neuro-immunology (Multiple Sclerosis, RIS, NMOSD, MOGAD, Neuro-Behçet's Syndrome and other inflammatory vasculopathies of the central nervous system), headaches and neuro-epidemiology.



FACULTY PROFILES



Prof. Aly Soliman

Consultant Neurologist

Zagazik University

Zagazig, Egypt

Prof Ali M. Soliman is a Professor and Chairman of Neurology Department at Zagazig University, Sharkia, Egypt. He is the Chairperson of many thesis in all Egyptian and some Arabian Universities, and Chairperson of all Conferences in Egypt, and Arabian Countries. Prof Ali M. Soliman also has Membership at the Egyptian Society of Neurology, Psychiatry and Neurosurgery, and Membership of Pan Arab Society of Neurology.



Prof. Maria Pia Sormani

Professor of Biostatistics

University of Genoa

Genoa, Italy

Prof. Aksel Siva graduated from the Istanbul University Cerrahpaşa School of Medicine and completed his residency in neurology in the same institution. He currently works as Professor of Neurology at the Department of Neurology of Istanbul University Cerrahpaşa School of Medicine; where he was the past-chairman and the head of the Clinical Neuro-immunology Unit & Multiple Sclerosis Clinic.

Prof. Siva served as President of The Turkish Neurological Society for 3 consecutive terms between 2003 and 2009. He is a founding member of The Turkish Multiple Sclerosis Society (1989) and served as an Executive Committee member of ECTRIMS between 2003-2006 and of The European Neurological Society between 2009–2014. He was a member of the European Academy of Neurology (EAN) scientific program committee between 2014–2018 and was elected as a Fellow of The EAN in 2015. He had been a member of the Education Executive Committee of The World Federation of Neurology between 2002-2010 and then was appointed as chair of the WFN Standards & Evaluations Committee until 2018.

Prof. Siva is among the founders of the Radiologically Isolated Syndrome Consortium and currently a member of its core group. He is a member of the The Guthy-Jackson Charitable Foundation International Clinical Consortium since 2018. He was the recipient of the Istanbul Medical Association's prestigious "Turkan Saylan Medical Science Award" in 2021 for people who had contributed significantly to medical sciences.

Prof. Siva areas of interest and research are: Clinical neuro-immunology (Multiple Sclerosis, RIS, NMOSD, MOGAD, Neuro-Behcet's Syndrome and other inflammatory vasculopathies of the central nervous system), headaches and neuro-epidemiology.



FACULTY PROFILES



Dr. Elsayed Tag Eldin

Professor of Neurology

Tanta University

Tanta, Egypt

Dr. Elsayed Tag El-Din received his M.B.B.CH with Honors in 1981, his M.S. in Neuropsychiatry in 1987 and M.D. in Neurology in 1992 from the Tanta Faculty of Medicine, University of Tanta. Dr. Elsayed Tag El-Din is currently a Board member of the Egyptian society of Multiple Sclerosis, and previously was the Director of Neurology and Head of the Neuropsychiatry department from 2016-2018 at the University of Tanta.

Dr. Tag El-Din is also the treasurer of the Egyptian society of Neurology, Psychiatry, and Neurosurgery. Dr. Elsayed Tag El-Din has more than 40 researches published in the national and international journals in the field of neurology, and has been a discussion committee member on more than 30 thesis (MS and MD thesis) of Neurology in most of the Egyptian Universities.



Dr. Farouk Talaat
Professor of Neurology
Alexandria University
Alexandria, Egypt

Prof. Talaat is currently Professor of Neurology at the Faculty of Medicine, Alexandria University and the head and founder of multiple sclerosis unit in Alexandria University Hospital and Consultant Neurologist in MS Unit at Alexandria Insurance Hospitals.



FACULTY PROFILES



Ms. Karen Vernon

Multiple Sclerosis Clinical Nurse Specialist

Northern Care Alliance (Salford Royal NHS Foundation Trust)

Manchester, United Kingdom

Karen Vernon : RGN, BSc (Hons), Post Grad Dip, MSCN, None Medical Prescriber, was the Nurse Consultant in Multiple Sclerosis of the Greater Manchester & East Cheshire MS Service which is based at Salford Royal NHS Foundation Trust (one of the leading MS Centers in the UK), until March 2022. Since then, having retired from full time working, Karen now carries out MS nurse clinics for the Manchester team, to help with staff shortages and also to go back to her passion of the essence of MS nursing.

Karen's professional background is firmly in neurology having worked within the specialty for a long time within varying settings. From an acute neurology ward, to becoming a community neurology nurse to specializing in MS at different centers leading to the very best job of being a nurse Consultant.

Aside from the advances for patients, one of the overwhelming positives in MS care has been the development of the MS specialist nurse role and it is the future proofing of the role that continues to be one of Karen's drivers. The equity of service provision to patients with MS is another important aspect of care provision at this present time.

Karen has also been co-chair of the United Kingdom Multiple Sclerosis Specialist Nurse Association (UKMSSNA), and this year received a lifetime achievement award from the association for services to MS nursing. Karen has also been the UK representative on the Multiple Sclerosis Nurses International Certification Board (MSNICB).

Karen has been involved in MS research projects with both Salford and Nottingham University, looking at varying aspects of MS care and has coauthored on several MS publications over the years; as well as having the opportunity to present platform/ poster presentations at national and international MS conferences.

Along with 2 Consultant colleagues, Karen developed an award winning (proud moment) neurological examination course for MS nurses to help them enhance their skills.



Prof. Bassem I. Yamout

Professor of Neurology, Director, Neurology Institute
American University of Beirut, Harley Street Medical Center
Abu Dhabi, United Arab Emirates

Prof. Bassem I. Yammout is currently Professor of Neurology at the American University of Beirut Medical Center and director of the Neurology Institute at Harley Street Medical Center in Abu Dhabi. He graduated from medical school at AUB in 1984, received his training in neurology at the University of Cincinnati-Ohio in the USA, and followed by a fellowship at the Montreal Neurological Institute-McGill University in Canada. He received his American Board in Neurology and joined the faculty at the American University of Beirut in 1988. He is currently head of clinical research at the Multiple Sclerosis Center, president of MENACTRIMS (Middle East North Africa Committee for Treatment and Research in Multiple Sclerosis), member of the MSIF (Multiple Sclerosis International Federation) Scientific Advisory Board, and fellow of the American Academy of Neurology.

Prof. Yammout is one of the leading experts on multiple sclerosis in the Middle East with recent research on epidemiology of the disease in the region, quality of life of patients in the Middle East. In addition, he is currently the principal investigator on several ongoing international multiple sclerosis research trials. Prof. Yammout has authored many research and review papers and is currently Chief Editor of the MS newsletter "MS today", and on the editorial board of "Multiple Sclerosis and Related Disorders", "Journal of Multiple Sclerosis" and "Pediatric Neurology".



FACULTY PROFILES



Prof. Magd Zakaria

Professor of Neurology
Ain Shams University
Cairo, Egypt

Prof. Magd Zakaria was born in Cairo, 26 October 1956, attended the English School of Cairo till graduation in 1974. He was a student of the Medical School of Ain Shams University, Cairo, till 1980 where he graduated with honors. Prof. Zakaria completed his residency at the Neuropsychiatric Department of Ain Shams University till 1984 when he obtained his Master's Degree in Neuropsychiatry.

Prof. Zakaria was an Assistant Lecturer till 1989 and then he obtained his MD degree in Neurology in 1989 and became a Lecturer. Assistant Professor of Neurology in 1994. Professor of Neurology since 1999 until now. The Head of the Neurology Department at the Ain Shams Specialized University Hospital during 1990. Head of the Stroke Unit during 1991. The head of the Neuropsychiatric department of Ain Shams medical school from August 2015, till August 2017. Ever since 2014, Prof. Zakaria is the Head of the Multiple Sclerosis Unit at the Ain Shams University Hospital.



Dr. Maya Zeineddine

PhD Candidate, Limoges University, France

MS Certified Specialist

Executive Secretary, MENACTRIMS

Beirut, Lebanon

Dr. Zeineddine is a Lebanese Senior Clinical Pharmacist specialized in neurology and multiple sclerosis. Winner of the "Best Clinician" and "Positive Attitude" awards, she completed several internships at major hospital and community pharmacies in Lebanon and the US and graduated from LAU with a Doctor of Pharmacy degree with distinction in June 2011. In August 2015, she successfully passed the Multiple Sclerosis Specialization examination and became the first Multiple Sclerosis Certified Pharmacist in Lebanon and the Middle East. From September 2011-August 2020, she worked as the clinical pharmacist of the Multiple Sclerosis Center of the AUBMC.

In December 2015, she was appointed as Executive Secretary of the Middle East North Africa Committee for Research and Treatment in Multiple Sclerosis. Dr. Zeineddine is an active researcher and is involved in several international clinical trials in the field of multiple sclerosis and is a member of several national and international professional organizations. She is also the fund coordinator at the National Multiple Sclerosis Society of Lebanon (MSSL) and the leader of the Neuropsychiatry Listserv at IVPN. Dr. Zeineddine is currently a PhD candidate at University of Limoges, France.





EXHIBITOR PROFILES



EXHIBITOR PROFILES

BOOTH D3B



Merck is a leading science and technology company, active in Healthcare, Life Science and Performance Materials.

Since our establishment 350 years ago in Darmstadt, Germany, we have become truly global. Today, we have approximately 52,000 employees working on breakthrough solutions and technologies in 66 countries.

As a leading science and technology company, we discover and develop for life in all its vibrancy, drawing on our unique expertise in healthcare, life science and performance materials. Our ideas are everywhere, from cancer therapies and laboratory tools to the display of your smartphone or the color of your car.

With a holistic approach, we design and develop medicines and intelligent devices that provide ongoing care for patients beyond their treatment. This includes new medications to treat conditions such as cancer or multiple sclerosis (MS), but also innovative technologies that make life easier for patients. For example, our injection device and disease monitoring software allow patients with MS to self-inject their medicine and monitor its administration. With cancer, our precise approach uses biomarkers that can match potential treatment to individual patients.

Our goal is to support people at every stage of life – also when it comes to creating new life. We have helped many women and couples achieve their dream of having a baby. As the global market leader in fertility treatments, we do what we do with passion – and we think further ahead. We have complemented our portfolio by fertility technologies, aiming to further increase the possibility of in vitro fertilization (IVF) success.

For more information, please visit www.merckgroup.com.

BOOTH D1B



Novartis is reimagining medicine to improve and extend people's lives. As a leading global medicines company, we use innovative science and digital technologies to create transformative treatments in areas of great medical need. In our quest to find new medicines, we consistently rank among the world's top companies investing in research and development. Novartis products reach more than 750 million people globally and we are finding innovative ways to expand access to our latest treatments. About 105,000 people of more than 140 nationalities work at Novartis around the world.

For more information visit: www.novartis.com



BOOTH D2B



Roche is a global pioneer in pharmaceuticals and diagnostics focused on advancing science to improve people's lives. The combined strengths of pharmaceuticals and diagnostics under one roof have made Roche the leader in personalised healthcare – a strategy that aims to fit the right treatment to each patient in the best way possible.

Roche is the world's largest biotech company, with truly differentiated medicines in oncology, immunology, infectious diseases, ophthalmology and diseases of the central nervous system. Roche is also the world leader in in vitro diagnostics and tissue-based cancer diagnostics, and a frontrunner in diabetes management.

Founded in 1896, Roche continues to search for better ways to prevent, diagnose and treat diseases and make a sustainable contribution to society. The company also aims to improve patient access to medical innovations by working with all relevant stakeholders. More than thirty medicines developed by Roche are included in the World Health Organization Model Lists of Essential Medicines, among them life-saving antibiotics, antimalarials and cancer medicines. Moreover, for the tenth consecutive year, Roche has been recognised as the most sustainable company in the Pharmaceuticals Industry by the Dow Jones Sustainability Indices (DJSI).

The Roche Group, headquartered in Basel, Switzerland, is active in over 100 countries and in 2018 employed about 94,000 people worldwide. In 2018, Roche invested CHF 11 billion in R&D and posted sales of CHF 56.8 billion. Genentech, in the United States, is a wholly owned member of the Roche Group. Roche is the majority shareholder in Chugai Pharmaceutical, Japan.

For more information, please visit www.roche.com.

About Roche in Neuroscience

Neuroscience is a major focus of research and development at Roche. The company's goal is to develop treatment options based on the biology of the nervous system to help improve the lives of people with chronic and potentially devastating diseases. Roche has more than a dozen investigational medicines in clinical development for diseases that include multiple sclerosis, spinal muscular atrophy, neuromyelitis optica spectrum disorder, Alzheimer's disease, Huntington's disease, Parkinson's disease, Duchenne muscular dystrophy and autism.



EXHIBITOR PROFILES

BOOTH D1A



Biologix FZco, a company organized and existing under the laws of the United Arab Emirates, was incorporated in the Dubai Airport Free Zone in September 2002 as a regional supplier and promoter of Biotechnology products.

Biologix FZco is a service provider to Pharmaceutical and Biotech companies and performs Named Patient Supply, market access, promotion and sales, detailing, logistics, registration, medical and disease awareness activities including Pharmacovigilance and Risk Management Plan, on behalf of its partners in the Middle East and North Africa (MENA) markets.

Biologix main partners include: Amarin, Biogen, Cardiome, Celgene, Chiesi, Ipsen, Jazz Pharmaceuticals, Takeda, Shire, Nalpropion, and Pharmaxis.

Biologix premises are being regularly audited by the Ministry of Health in the United Arab Emirates and by its Principals and business partners. Furthermore, the company has acquired the ISO 9001:2000 Certification and the Trace Certification.

For the past 15 years, Biologix has been and continues to address the needs of patients in the MENA suffering from serious and critical conditions by ensuring a fast supply of innovative products of the highest quality.

For more information visit: www.biologixpharma.com

BOOTH G1



For 40 years, Hikma has been developing, manufacturing and marketing branded generic medicines in the MENA region. We supply quality branded generics to 17 markets and have a proven track record with in-licensors. We are also building our injectable medicines business in the territory. Our long-standing presence in the MENA has made us the 5th largest pharmaceutical manufacturer in the region and we have US FDA inspected facilities in Jordan and Saudi Arabia.

As a leading licensing partner globally. Since the early 1980s, we have grown to build a successful track record with global licensing partners. Our partners collaborate with us because of our reputation for quality, our strong brand recognition, and our US FDA inspected manufacturing facilities. Organizations we work with know they can rely on us to deliver consistently, in every market, all over the world. We're helping to shape a healthier world that enriches all of our communities.

Better health, Within reach, Everyday...

For more information visit: www.hikma.com

EXHIBITOR PROFILES



BOOTH A



Aspen Healthcare, a division of Aspen Pharmacare Holdings Limited, the largest listed pharmaceutical company in Africa, was founded in 2009 to bring the Aspen Group's expanding portfolio of pharmaceutical and consumer healthcare products to the Middle East, North Africa and Turkey (MENAT).

Headquartered in Dubai, the commercial operation was established in 2010 when the first partnerships were sealed to leverage the global acquisitions in the region.

From 3 employees in 2009 to 217 today, Aspen Healthcare rapidly grew establishing itself as a key healthcare player in the MENAT region.

Since 2009 our Dubai headquarters has been home to the commercial team as well as the Shared Services Hub, which handles financial and IT related support for Aspen entities in Europe, MENAT and Canada. Aspen Healthcare strives to offer patients and stakeholders the best possible experience throughout the region and beyond.

For more information visit: www.aspenpharma.com

BOOTH A



At Janssen Neuroscience, we have an ambitious goal – to ensure a future where we can predict and prevent some of humankind's most devastating and debilitating nervous system disorders.

By partnering with the neuroscience community, we aim to lead the new era of neuroscience precision medicine, developing pioneering solutions to reduce the burden and disability caused by nervous system diseases.

For more information visit: www.janssen.com



EXHIBITOR PROFILES

BOOTH C



Bayer is a global enterprise with core competencies in the life science fields of health care and agriculture. Its products and services are designed to benefit people and improve their quality of life. At the same time, the Group aims to create value through innovation, growth and high earning power. Bayer is committed to the principles of sustainable development and to its social and ethical responsibilities as a corporate citizen. In fiscal 2017, the Group employed around 99,800 people and had sales of 35.0 billion euros. Capital expenditures amounted to 2.4 billion euros, R&D expenses to 4.5 billion euros

For more information visit: www.bayer.com

BOOTH B



Pharmascience is a leading manufacturer of pharmaceuticals, serving both the Canadian domestic and international markets. With the fastest growing market share amongst the Canadian market, we have become a major partner of the international pharmacy community. Our extensive Canadian production capacity allows us to offer best-in-class supply reliability.

High quality, interchangeable, and affordable medicines allow public and private drug systems to remain viable. Without the steady launch of affordable medicines, health systems would rapidly become unsustainable and result in a two-tiered form of pharmaceutical care contrary to the guiding principles of Canadian and international health care.

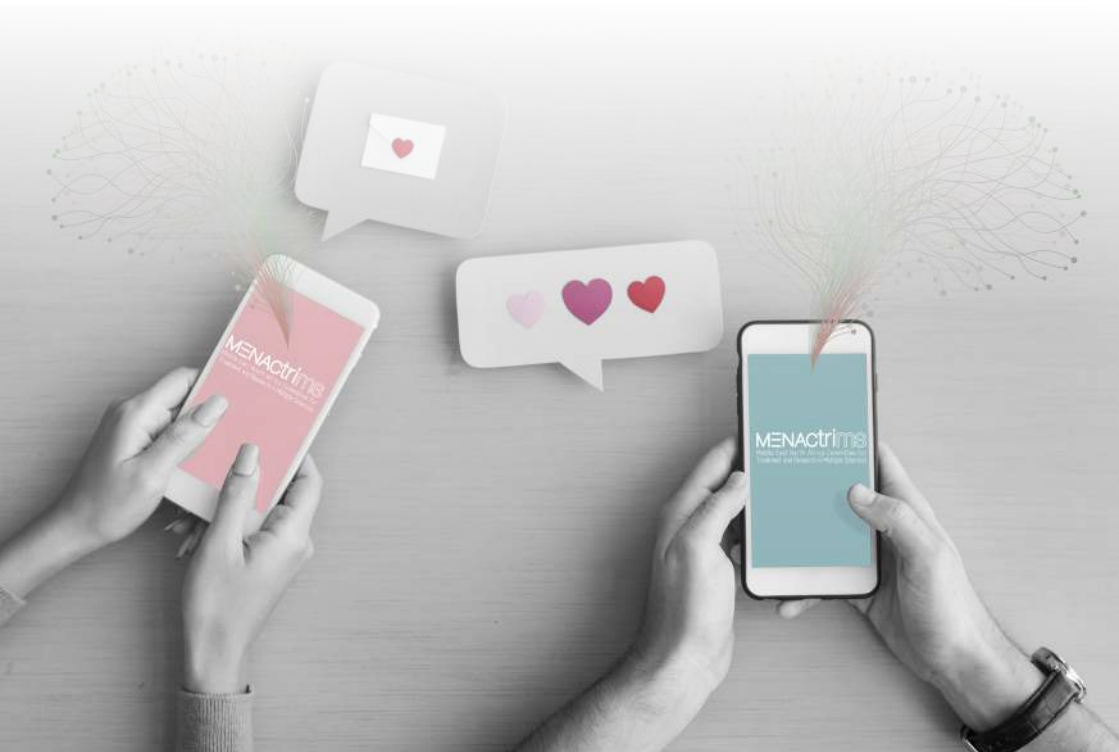
Our expert team of global professionals delivers over 300 product families, including critical therapeutic products, across the globe. Our capabilities include primary care and specialty products, injectables, and high-potency solid oral dosage forms. In addition to high quality products, we strive to offer extensive and reliable supply capabilities. Pharmascience areas of primary and specialty therapeutic expertise include: Pain, Urology, Cardio, Central Nervous System, Respiratory, Musculo-skeletal, Oncology, Anti-infective, Gastro (GI).

For more information visit: www.pharmascience.com

Follow us on our social media channels



VISIT
WWW.MENACTRIMS.ORG





DISCLAIMER

The relationship between the official institutions endorsing this event and the sponsoring organizations of an event or event-related item do not represent exclusive agreements between the institutions and the organization, nor do they suggest that institutions endorse the programs, products or services of the organization.

Copyright © 2021-2022, Lumina Organizers All Rights Reserved