

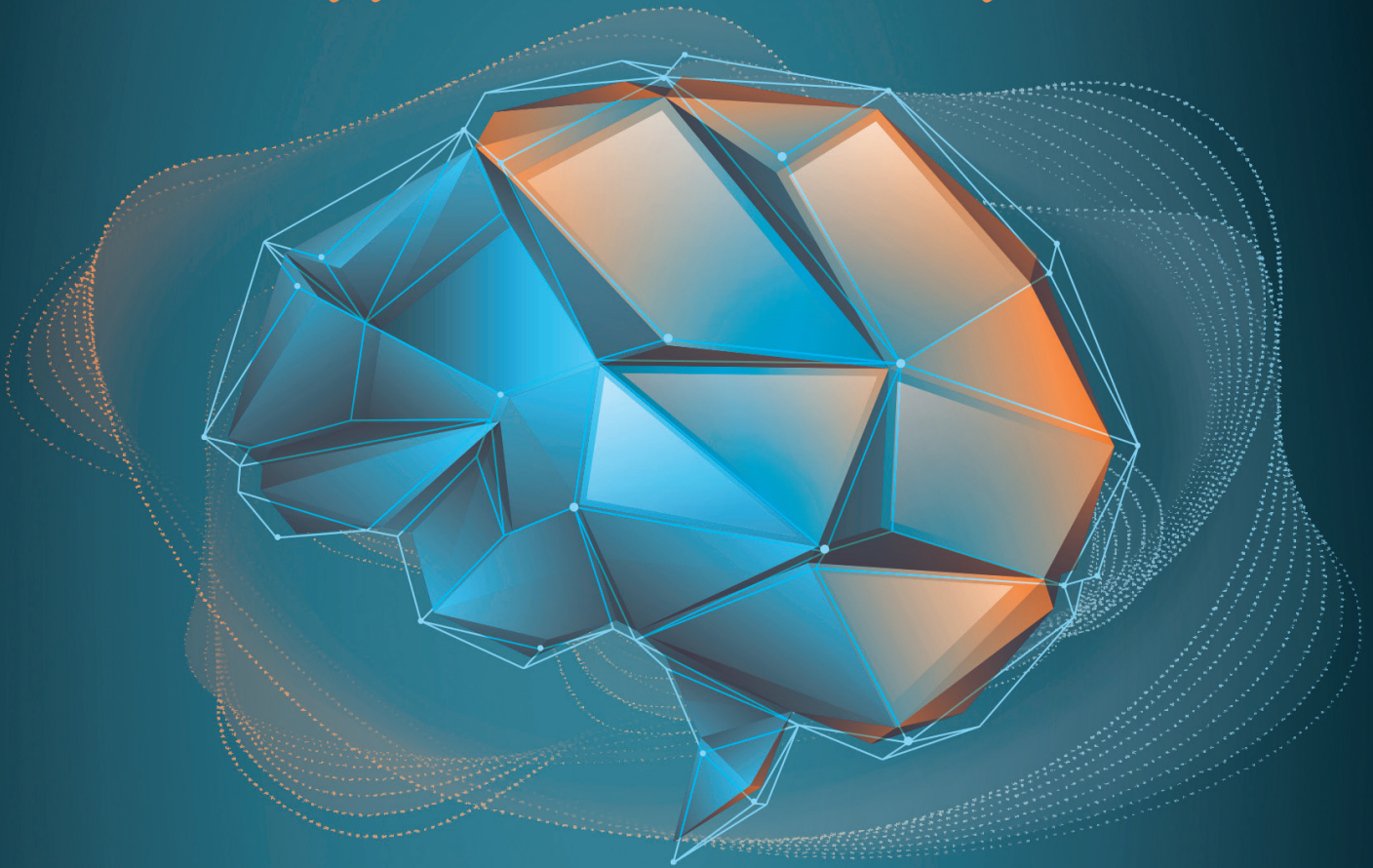


9TH

AIN SHAMS INTERNATIONAL NEUROLOGY CONFERENCE

In Collaboration with
The Egyptian Society of Neurology, Psychiatry and Neurosurgery

Neurology In The Upcoming Decade




Under the Patronage of
President of Ain Shams University
Prof. Mahmoud El Meteini
Dean of faculty of medicine,
Ain Shams University
Prof. Osama Mansour
Chairman of Neuropsychiatry
Prof. Maha Mohamed El-Sayed

Conference President
Prof. Azza Abdel Nasser
Vice President
Prof. Ayman Nasef
General Secretary
Prof. Ahmed Elbassiony

Honorary Presidents
Prof. Hany Aref
Prof. Nevine El-Nahas
Prof. Nahed Salah Eldin
Prof. Nagia Ali Fahmy

 14th - 15th september 2023

 Intercontinental city stars - cairo





Exhibition



- A Wide area provided for a large medical exhibition including some of largest pharmaceutical companies and manufacturers of Neurophysiology, Neurosonology, Interventional Neurology, Dementia, Epilepsy and Botulinum Toxin equipment.
- Space only stand 15.000 L.E Per Meter (Minimum Space 6 m 2*3 90.000 L.E)
- 50 % Deposit is due upon signing the Contract (Space Available 2*3 - 2*6)



VIP Lounge

VIP Lounge 1	75.000 L.E Per Day
VIP Lounge 2	75.000 L.E Per Day

3 Final Program

Cover page inserted	10.000 L.E
Back cover page	15.000 L.E
One page inserted Middle	5.000 L.E
One Page inserted	5.000 L.E

4 Registration Badges Sponsor

200.000 L.E

- Sponsor Logo Will be Printed in All Conference Participant badge
- Material Should Be Provided By The Client)



5 Registration Area Exclusive

200.000 L.£

- Conference and companies close guests spend time in the registration waiting area lounge - serving amenities
- Company Logo on registration Lounge and on Counter



7 Lecture

- | | |
|--|-------------|
| - Lecture 15 Minutes
(Sponsored Plenary Lecture) | 90.000 L.£ |
| - Symposium 30 Minutes
(Sponsored of 2 or 3 lecture (30) Min) | 130.000 L.£ |

8 Congress Bag Sponsor (Exclusive)

200.000 L.£

- Your company's Logo will appear on 500 congress bags Given to all attendees
- putting advertisement, pens or notepads in the bags.



9

Gate on Main Hall

100.000 L.E



10

Gate on Exhibition Entrance

75.000 L.E



Contact Us

1/6 Fathy Taha El Sheikh-Gharabey Bldgs. - Cairo
+20 (7) 228880152 - 228880156 - 010101034534
www.asna2000.org/ina.net
www.facebook.com/ina2000/